


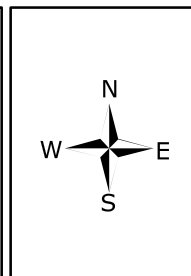


DRAWING TITLE:  
**SITE LOCATION MAP**  
 DRAWING NO.: **1**

**CITY OF CAMBRIDGE**  
**RUSSELL FIELD**

**Legend**  
 500 foot buffer from site boundary  
 One-half mile buffer from site boundary  
 Disposal site boundary

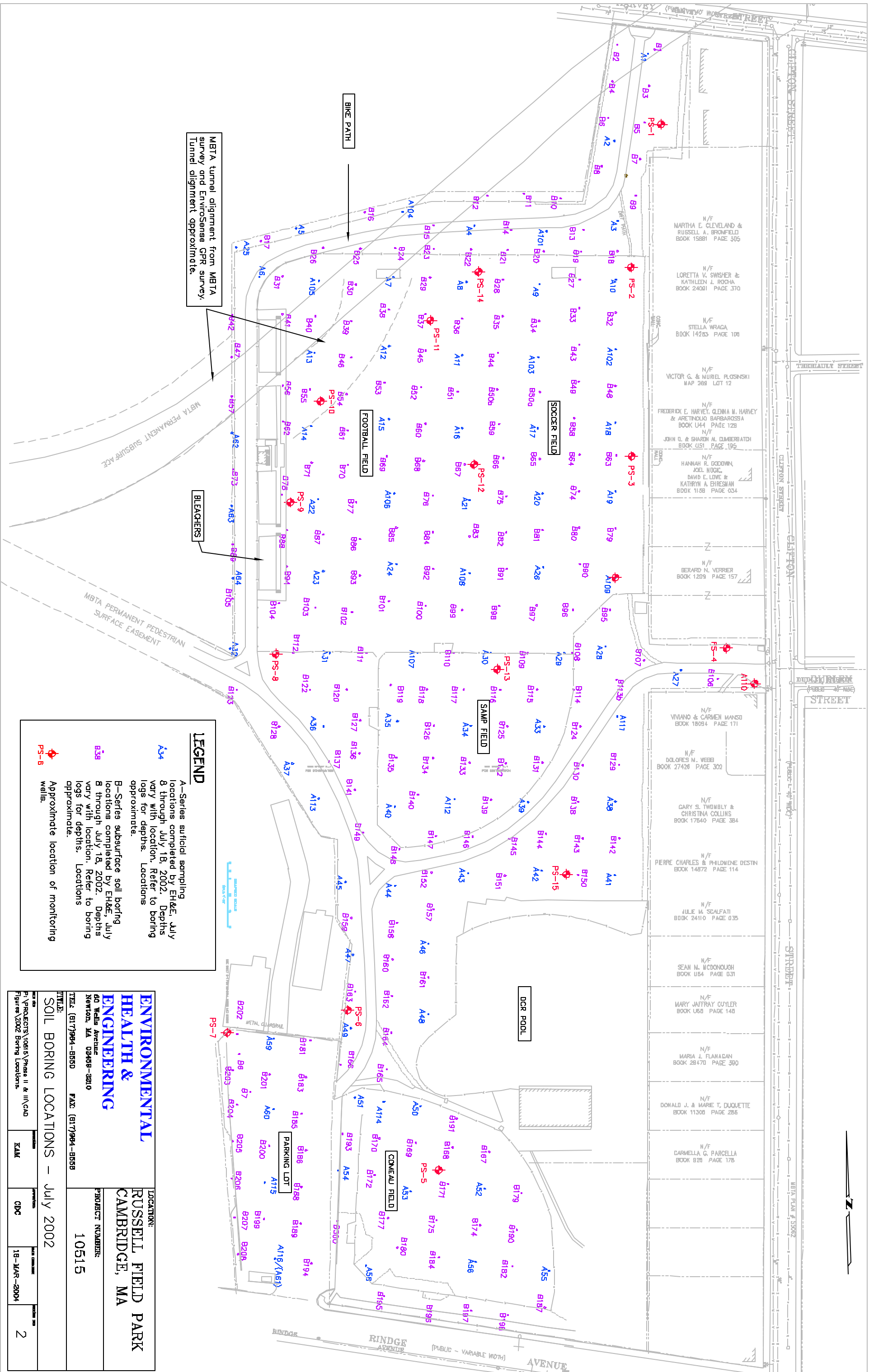


DESIGNED: ADS	CHECKED: KAM
APPROVED: CDC	
DATE: MARCH 2004	
SCALE: AS SHOWN	

**Plan Notes:**  
 USGS 1:25 000 Boston North topographic map created 1985. Underlying map was obtained from MapTech's Terrain Navigator Pro. Additional data layers created using ESRI ArcView and ArcMap.

**ENVIRONMENTAL HEALTH & ENGINEERING, INC.**  
 Environmental Health & Engineering, Inc.  
 60 Wells Avenue  
 Newton, MA 02459-3210  
 TEL: 617-964-8550 FAX: 617-964-8556





MBTA tunnel alignment from MBTA survey and EnviroSense GPR survey. Tunnel alignment approximate.

BLEACHERS

**LEGEND**

- A34 A—Series surface sampling locations completed by E&E, July 8 through July 18, 2002. Depths vary with location. Refer to boring logs for depths. Locations approximate.
- B38 B—Series subsurface soil boring locations completed by E&E, July 8 through July 18, 2002. Depths vary with location. Refer to boring logs for depths. Locations approximate.
- PS-6 Approximate location of monitoring wells.

**ENVIRONMENTAL HEALTH & ENGINEERING**

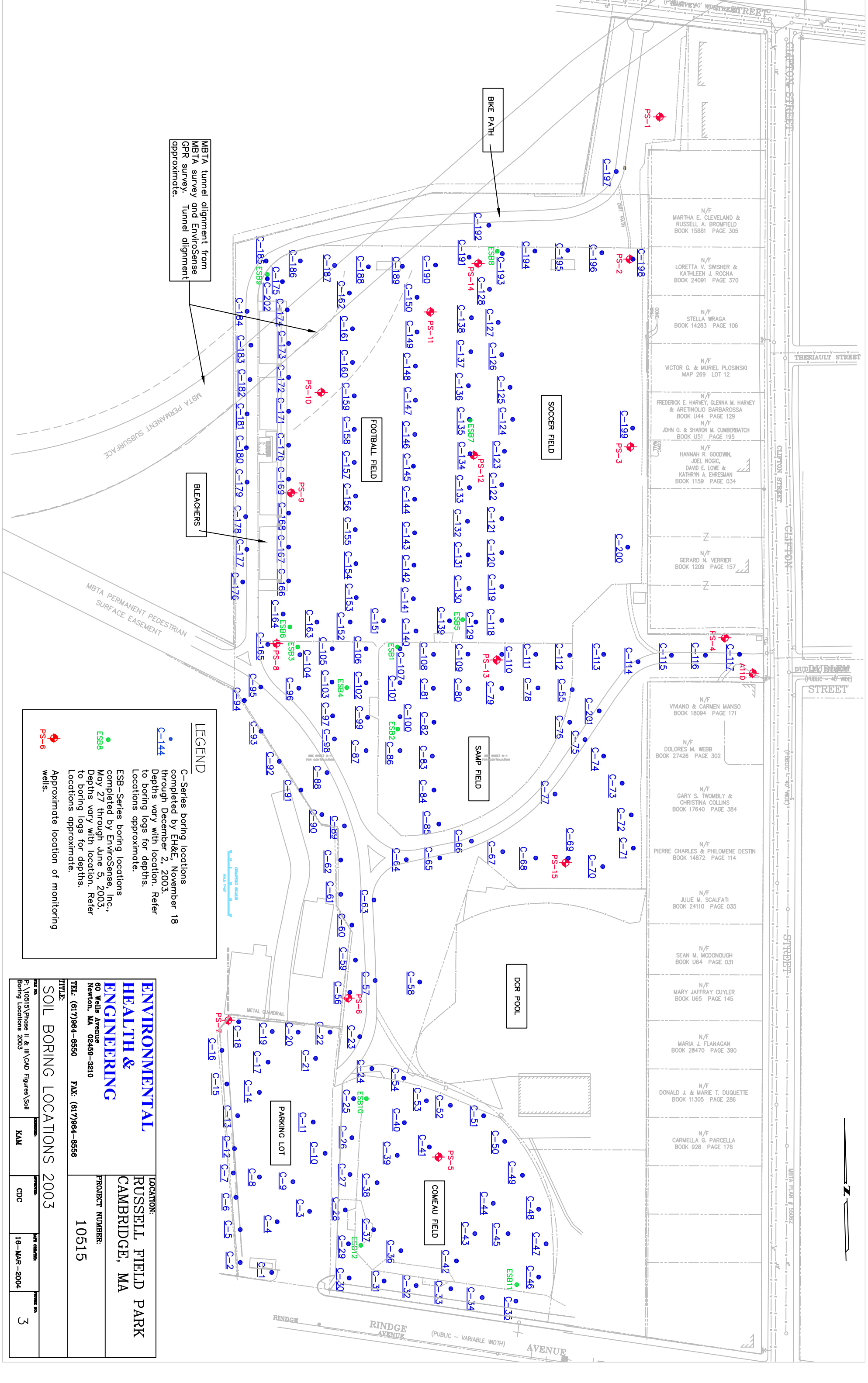
LOCATION: **RUSSELL FIELD PARK CAMBRIDGE, MA**

PROJECT NUMBER: **10515**

60 Wall Avenue  
Merrimack, MA 02455-3810  
TEL: (617)994-8850 FAX: (617)994-8558

**SOIL BORING LOCATIONS - July 2002**

DATE	PROJECTS	SCALE	DATE	SCALE
7/18/02	10515 Phase II & III CAD	K&M	7/18/02	18-JAR-2004
Figures 2002 Boring Locations				2



MBTA tunnel alignment from MBTA survey and EnviroSense GPR survey. Tunnel alignment approximate.

BLEACHERS

LEGEND  
 C-144  
 C-Series boring locations completed by EH&E, November 18 through December 2, 2003. Depths vary with location. Refer to boring logs for depths. Locations approximate.  
 ESB- Series boring locations completed by EnviroSense, Inc., May 27 through June 5, 2003. Depths vary with location. Refer to boring logs for depths. Locations approximate.  
 PS-6  
 Approximate location of monitoring wells.

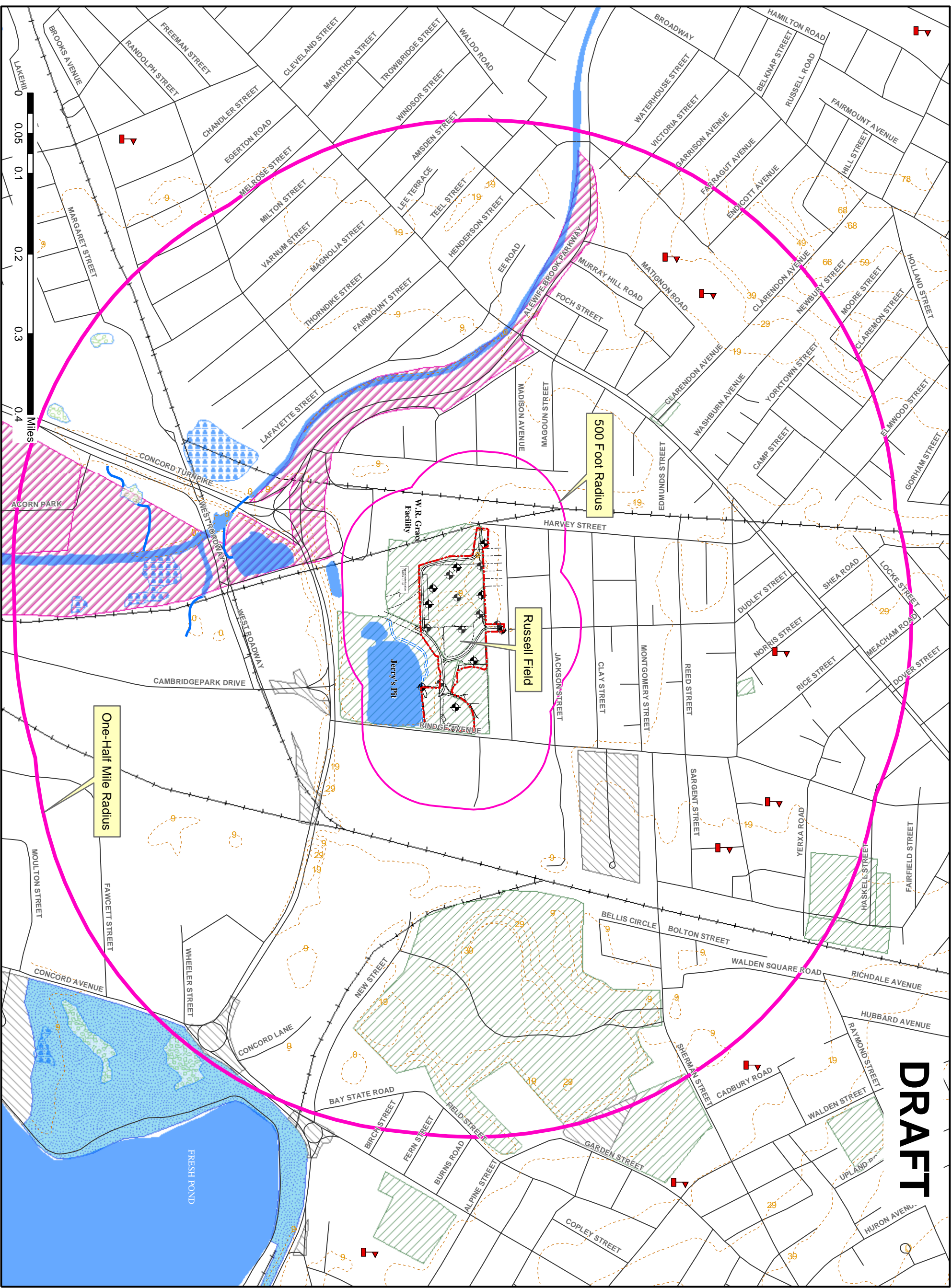
<b>ENVIRONMENTAL HEALTH &amp; ENGINEERING</b>		<b>LOCATION:</b> RUSSELL FIELD PARK CAMBRIDGE, MA	
<b>PROJECT NUMBER:</b> 10515		<b>PROJECT NO.:</b> 3	
<b>TITLE:</b> SOIL BORING LOCATIONS 2003			
TEL: (617)964-8550 FAX: (617)964-8556	60 Wells Avenue Newton, MA 02459-3210	PROJECT NO. 18-MAR-2004	DATE 16-MAR-2004

MBTA PERMANENT SUBSURFACE  
 MBTA PERMANENT PEDESTRIAN SURFACE EASEMENT

BIKE PATH  
 SOCCER FIELD  
 FOOTBALL FIELD  
 BLEACHERS  
 SAMM FIELD  
 DCR POOL  
 COMEAU FIELD  
 PARKING LOT

CLIFTON STREET  
 THERIAULT STREET  
 DUPONT STREET  
 RINDGE AVENUE  
 PS-1  
 PS-2  
 PS-3  
 PS-4  
 PS-5  
 PS-6  
 PS-7  
 PS-8  
 PS-9  
 PS-10  
 PS-11  
 PS-12  
 PS-13  
 PS-14  
 PS-15  
 ESB8  
 ESB7  
 ESB6  
 ESB5  
 ESB4  
 ESB3  
 ESB2  
 ESB1  
 ESB12  
 ESB11  
 ESB10  
 ESB9  
 C-197  
 C-196  
 C-195  
 C-194  
 C-193  
 C-192  
 C-191  
 C-190  
 C-189  
 C-188  
 C-187  
 C-186  
 C-185  
 C-184  
 C-183  
 C-182  
 C-181  
 C-180  
 C-179  
 C-178  
 C-177  
 C-176  
 C-175  
 C-174  
 C-173  
 C-172  
 C-171  
 C-170  
 C-169  
 C-168  
 C-167  
 C-166  
 C-165  
 C-164  
 C-163  
 C-162  
 C-161  
 C-160  
 C-159  
 C-158  
 C-157  
 C-156  
 C-155  
 C-154  
 C-153  
 C-152  
 C-151  
 C-150  
 C-149  
 C-148  
 C-147  
 C-146  
 C-145  
 C-144  
 C-143  
 C-142  
 C-141  
 C-140  
 C-139  
 C-138  
 C-137  
 C-136  
 C-135  
 C-134  
 C-133  
 C-132  
 C-131  
 C-130  
 C-129  
 C-128  
 C-127  
 C-126  
 C-125  
 C-124  
 C-123  
 C-122  
 C-121  
 C-120  
 C-119  
 C-118  
 C-117  
 C-116  
 C-115  
 C-114  
 C-113  
 C-112  
 C-111  
 C-110  
 C-109  
 C-108  
 C-107  
 C-106  
 C-105  
 C-104  
 C-103  
 C-102  
 C-101  
 C-100  
 C-99  
 C-98  
 C-97  
 C-96  
 C-95  
 C-94  
 C-93  
 C-92  
 C-91  
 C-90  
 C-89  
 C-88  
 C-87  
 C-86  
 C-85  
 C-84  
 C-83  
 C-82  
 C-81  
 C-80  
 C-79  
 C-78  
 C-77  
 C-76  
 C-75  
 C-74  
 C-73  
 C-72  
 C-71  
 C-70  
 C-69  
 C-68  
 C-67  
 C-66  
 C-65  
 C-64  
 C-63  
 C-62  
 C-61  
 C-60  
 C-59  
 C-58  
 C-57  
 C-56  
 C-55  
 C-54  
 C-53  
 C-52  
 C-51  
 C-50  
 C-49  
 C-48  
 C-47  
 C-46  
 C-45  
 C-44  
 C-43  
 C-42  
 C-41  
 C-40  
 C-39  
 C-38  
 C-37  
 C-36  
 C-35  
 C-34  
 C-33  
 C-32  
 C-31  
 C-30  
 C-29  
 C-28  
 C-27  
 C-26  
 C-25  
 C-24  
 C-23  
 C-22  
 C-21  
 C-20  
 C-19  
 C-18  
 C-17  
 C-16  
 C-15  
 C-14  
 C-13  
 C-12  
 C-11  
 C-10  
 C-9  
 C-8  
 C-7  
 C-6  
 C-5  
 C-4  
 C-3  
 C-2  
 C-1





**DRAFT**

**ENVIRONMENTAL**  
 60 Wells Avenue  
 Newton, MA 02459-3210  
 TEL: 617-964-9550 FAX: 617-964-8556

**Legend**

- Approximate location of monitoring well
- School
- Trains
- Streets and highways
- Elevation Contour (feet)
- 500 foot buffer from site boundary
- One-half mile buffer from site boundary
- Disposal site boundary

**MADEP Wetland Classifications**

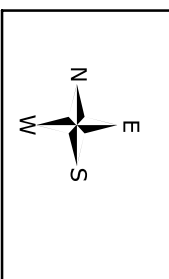
- Open Water
- Shallow Marsh Meadow or Fen
- Wooded Swamp Deciduous

**Protected and Recreational Open Space**

- Conservation (activities are non-facility based)
- Recreation (activities are facility based)
- Water Supply Protection
- Other

**Plan Notes:**  
 Boring Locations identified as "PS"-series and "A"-series are 110' stem logging wells. Boring Locations identified as "R"-series are retained from Brown, Richardson, and Rowe, MBTA Tunnel Alignment Agreement from MBTA Survey. Tunnel Alignment Approximate layers created by EHEC based upon data from field investigations and compilation of data from MassGIS Program.  
 Sources: created, edited, ESRI ArcView and ArcInfo

**CITY OF CAMBRIDGE**  
**RUSSELL FIELD**

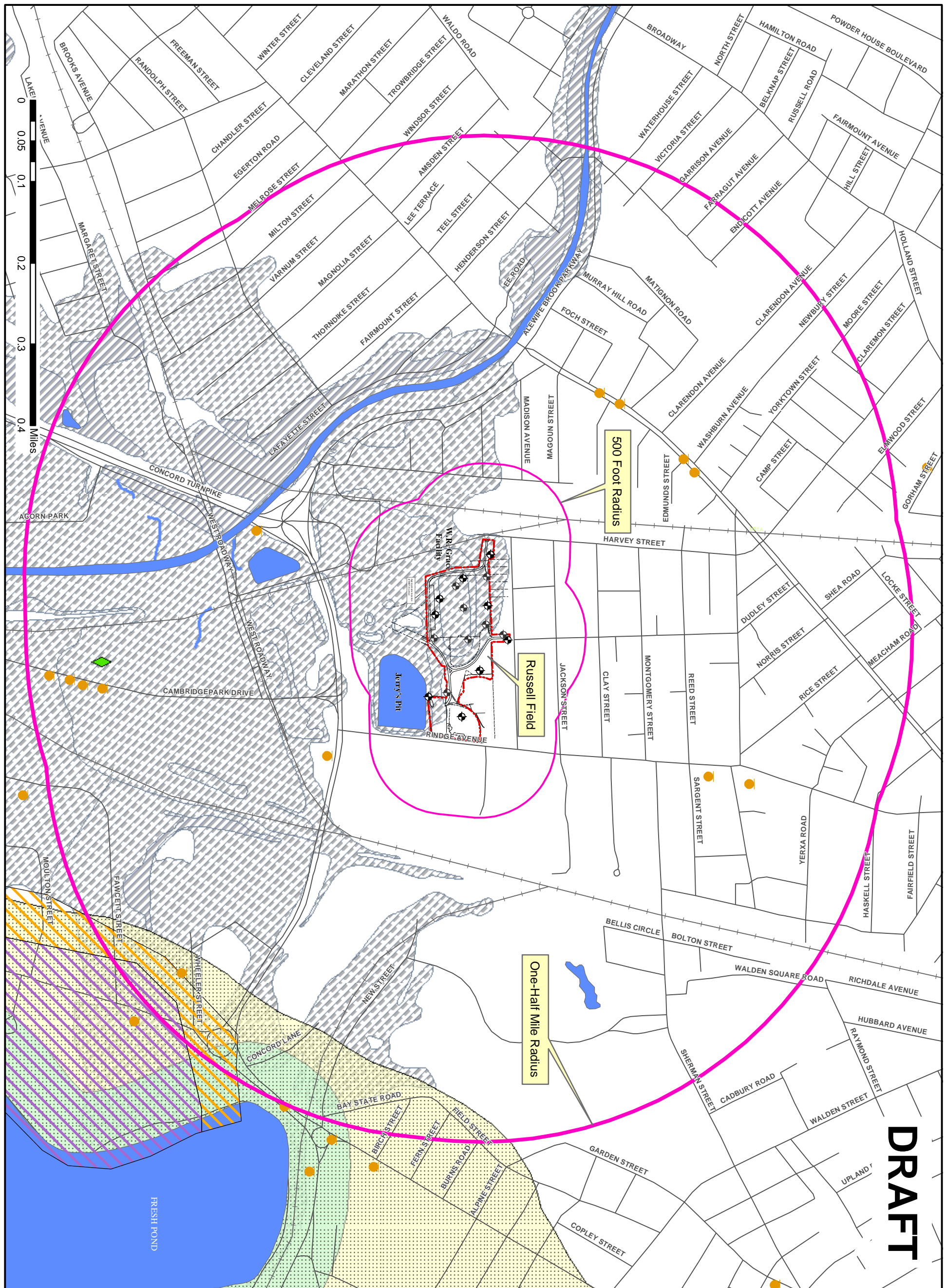


DESIGNED: ADS      CHECKED: KAM  
 APPROVED: CDC  
 DATE: MARCH 2004  
 SCALE: AS SHOWN


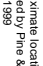
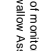
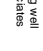


DRAWING TITLE:  
**NATURAL RESOURCES SITE TOPOGRAPHY**  
 DRAWING NO.: **4**



**DRAFT**



**Legend**

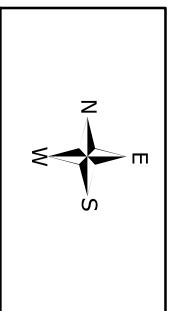
-  Approximate location of monitoring well installed by Pine & Swallow Associates 1988-1999
-  Streets and highways
-  Trains
-  Open Water
-  DEP Surface Water Protection Area (Zone A)
-  DEP Surface Water Protection Area (Zone B)
-  DEP Surface Water Protection Area (Zone C)
-  Medium Yield Aquifer (100-500 gallons per minute)
-  High Yield Aquifer (>300 gallons per minute)
-  FEMA 100-year flood zone
-  FEMA 500-year flood zone
-  Underground Storage Tanks
-  Bureau of Waste Management Facility
-  500 foot buffer from site boundary
-  One-half mile buffer from site boundary
-  Disposal site boundary

**Plan Notes:**

Boring locations identified as "PS" series and A-1-09 and A-1-10 are monitoring wells. Base map/CAD drawing of field conditions obtained from Brown, Richardson, and Rowe, MBTA, and the City of Cambridge. Additional monitoring well locations and data layers created by ER&E based upon data from field investigations and compilation of data from Massachusetts DEP, MBTA, and other sources. Figures created using ESRI ArcView and ArcMap.

**CITY OF CAMBRIDGE**

**RUSSELL FIELD**



DESIGNED: ADS	CHECKED: KAM
APPROVED: CDC	
DATE: MAR 2004	
SCALE: AS SHOWN	

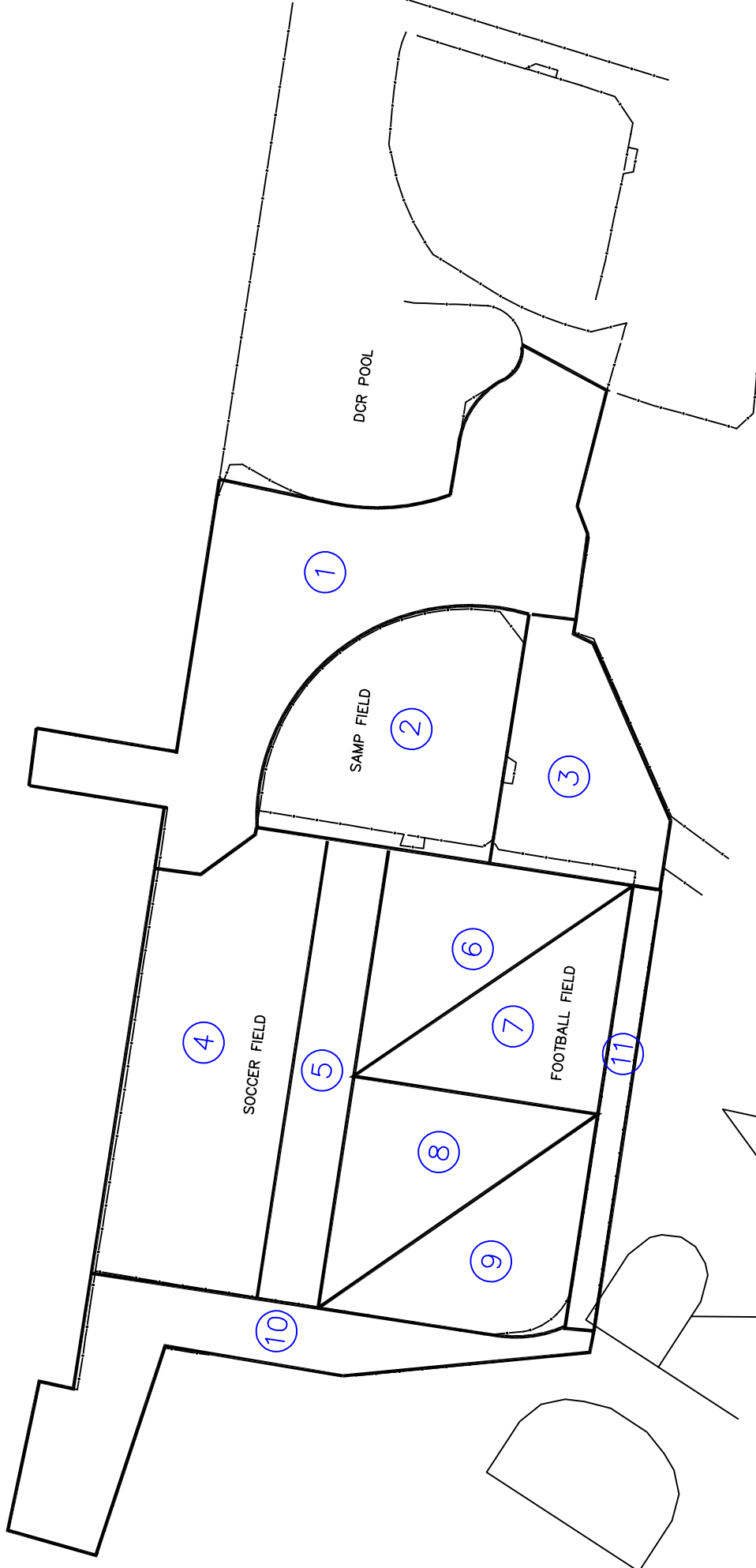
**DRAWING TITLE:**

**NATURAL RESOURCES**

**AQUIFERS**

**DRAWING NO.:**

**5**



DATE


**ENVIRONMENTAL  
HEALTH &  
ENGINEERING**

60 Wells Avenue  
Newton, MA 02459-3210  
TEL: (617)964-8550 FAX: (617)964-8556

LOCATION: RUSSELL FIELD PARK CAMBRIDGE, MA	PROJECT NUMBER: 10515
TITLE: SURFICIAL SAMPLING ZONES	
DATE: F:\PROJECTS\10515\Phase II & III\CAD Figures\10515SURFICIALSAMPLING_ZONES.DWG	APPROVED: KAM
DATE: 03-MAY-2004	FIGURE NO: 6



# DRAFT

  
 60 Wells Avenue  
 Newton, MA 02459-3210  
 TEL: 617-964-8550 FAX: 617-964-8556

**Legend**

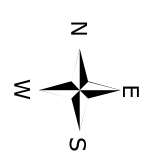
- ▲ Approximate location of boring where concentrations of >1% asbestos were detected in debris
- Approximate location of boring where concentrations of >1% asbestos were detected in soil
- Approximate location of boring where trace concentrations (<1%) of asbestos were detected in soil or debris
- ⊕ Approximate location of monitoring well
- Streets and Highways
- Pond

**Plan Notes:**

Boring locations marked as PS-2, PS-6, and PS-14 monitoring well locations.  
 G.A. represents approximate location of formerly proposed Garden Area  
 Base map/CAD drawing of field conditions obtained from Brown, Richardson, and Rowe.  
 MBTA Tunnel Alignment from MBTA Survey.  
 Tunnel Alignment Approximate.  
 Additional annotation and data layers created by ERM based upon data from field investigations and compilation of data from Massachusetts Program. Figures created using ESRI ArcView and ArcMap.

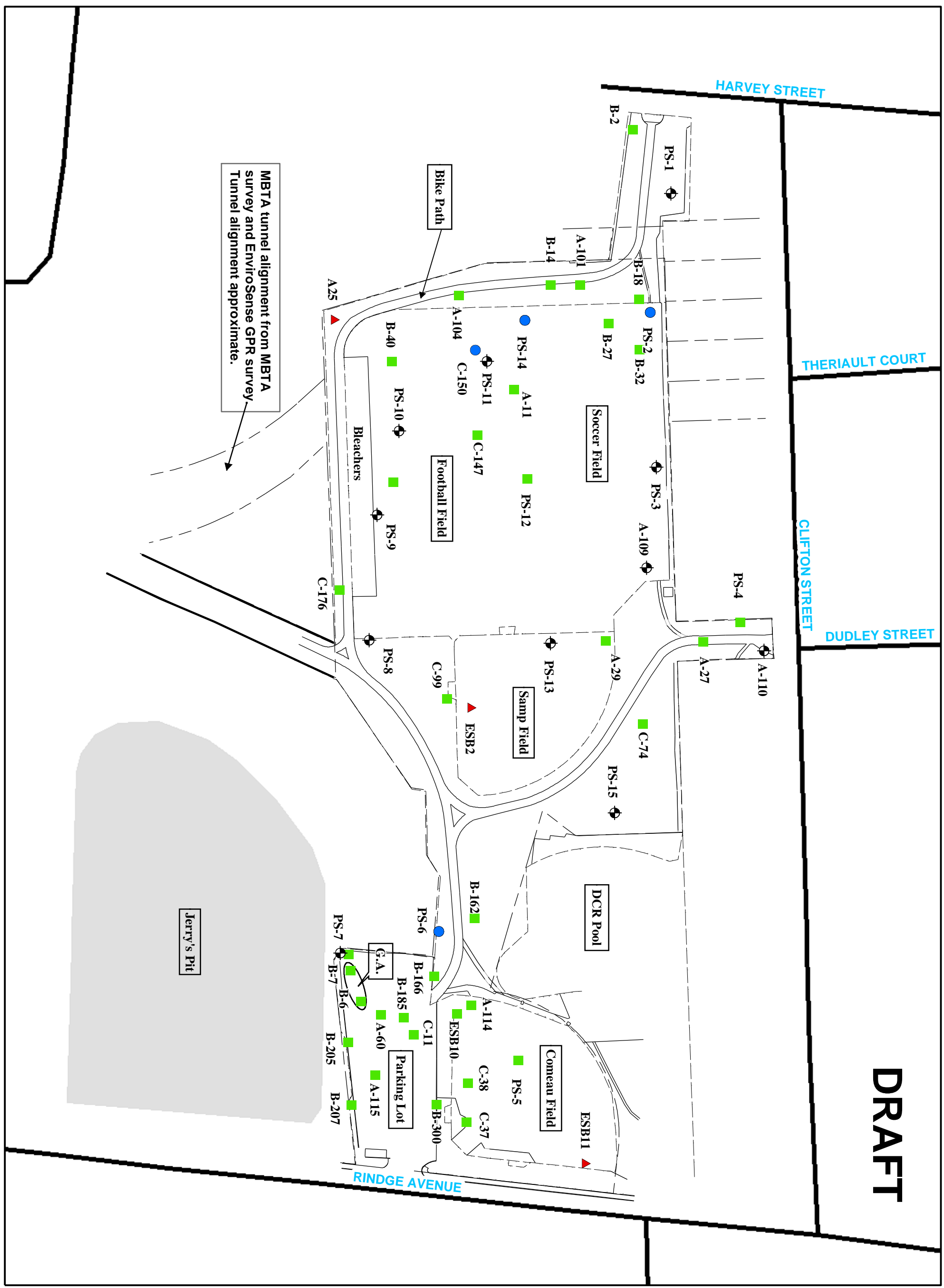
CITY OF CAMBRIDGE

**RUSSELL FIELD**



DESIGNED: ADS CHECKED: KAM  
 APPROVED: CDC/DJSJ  
 DATE: MARCH 2004  
 SCALE: AS SHOWN

DRAWING TITLE:  
**LOCATIONS OF DETECTED ASBESTOS IN SOIL AND DEBRIS**  
 DRAWING NO.:  
**7**



MBTA tunnel alignment from MBTA survey and EnviroSense GPR survey. Tunnel alignment approximate.

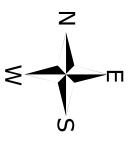
# DRAFT

- Legend**
- Approximate location of SVOC, Metal, or EPH concentrations in soil exceeding MCP Standards
  - Approximate location of monitoring well
  - Streets and Highways
  - Pond

**Plan Notes:**

Boring Locations Identified as "PS"-series and A-109 and A-110 are monitoring wells. G.A. represents approximate location of formerly proposed Garden Area. Base map/CAD drawing of field conditions obtained from Brown, Richardson, and Rowe. MBTA Tunnel Alignment from MBTA Survey. Tunnel Alignment: Approximate. Additional annotation and data layers created by EH&E based upon data from field investigations and compilation of data from MassGIS Program. Figures created using ESRI ArcView and ArcMap. Investigations and compilation of data from MassGIS Program. Figures created using ESRI ArcView and ArcMap.

**CITY OF CAMBRIDGE**  
**RUSSELL**  
**FIELD**

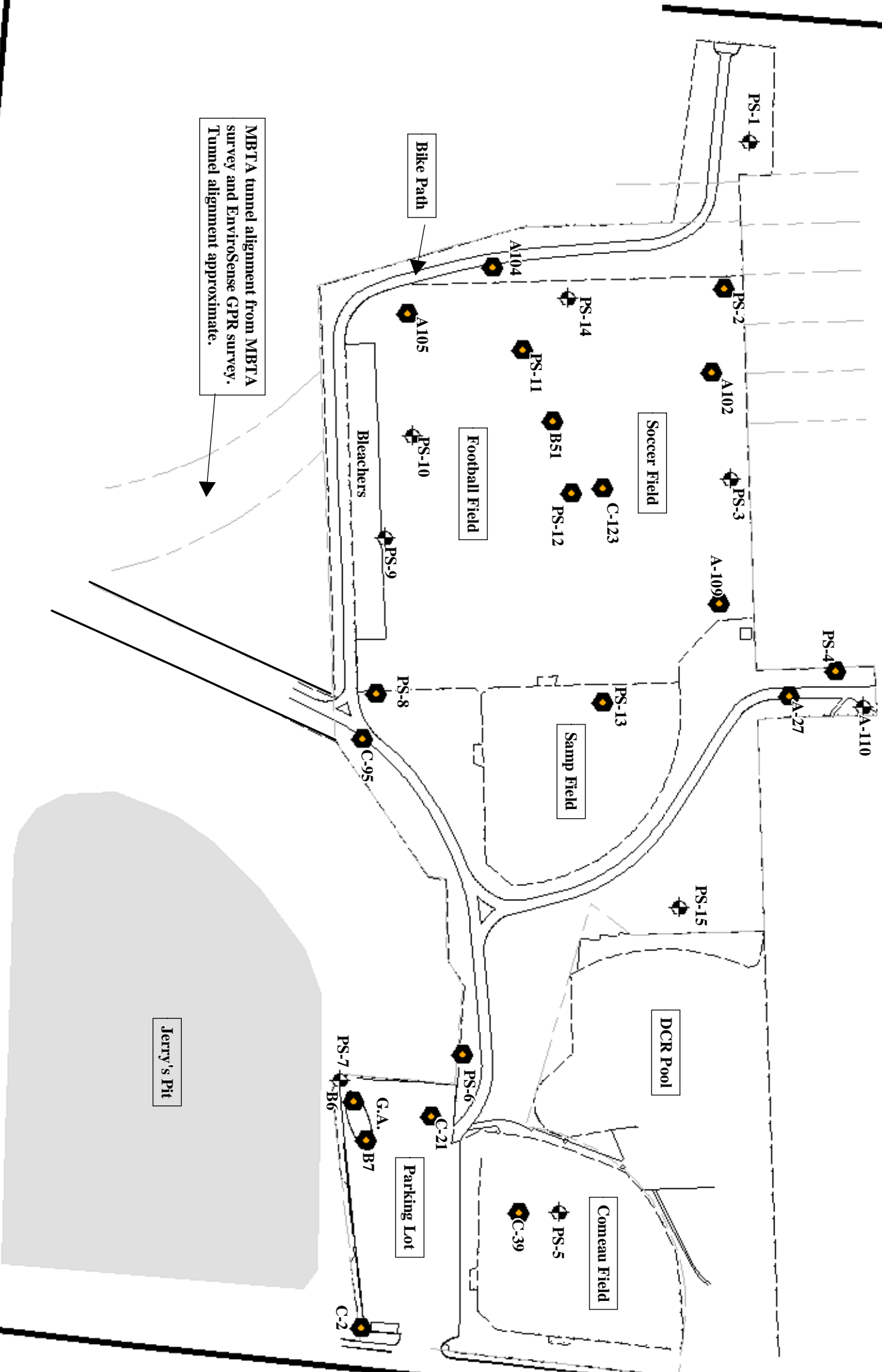


DESIGNED:	CHECKED:
ADS	KAM
APPROVED:	
CD/DSJ	
DATE:	
MARCH 2004	
SCALE:	
AS SHOWN	

**DRAWING TITLE:**  
**LOCATIONS OF DETECTED SVOCs, METALS AND EPHs EXCEEDING MCP CRITERIA IN SOIL**

**DRAWING NO.:**

**8**

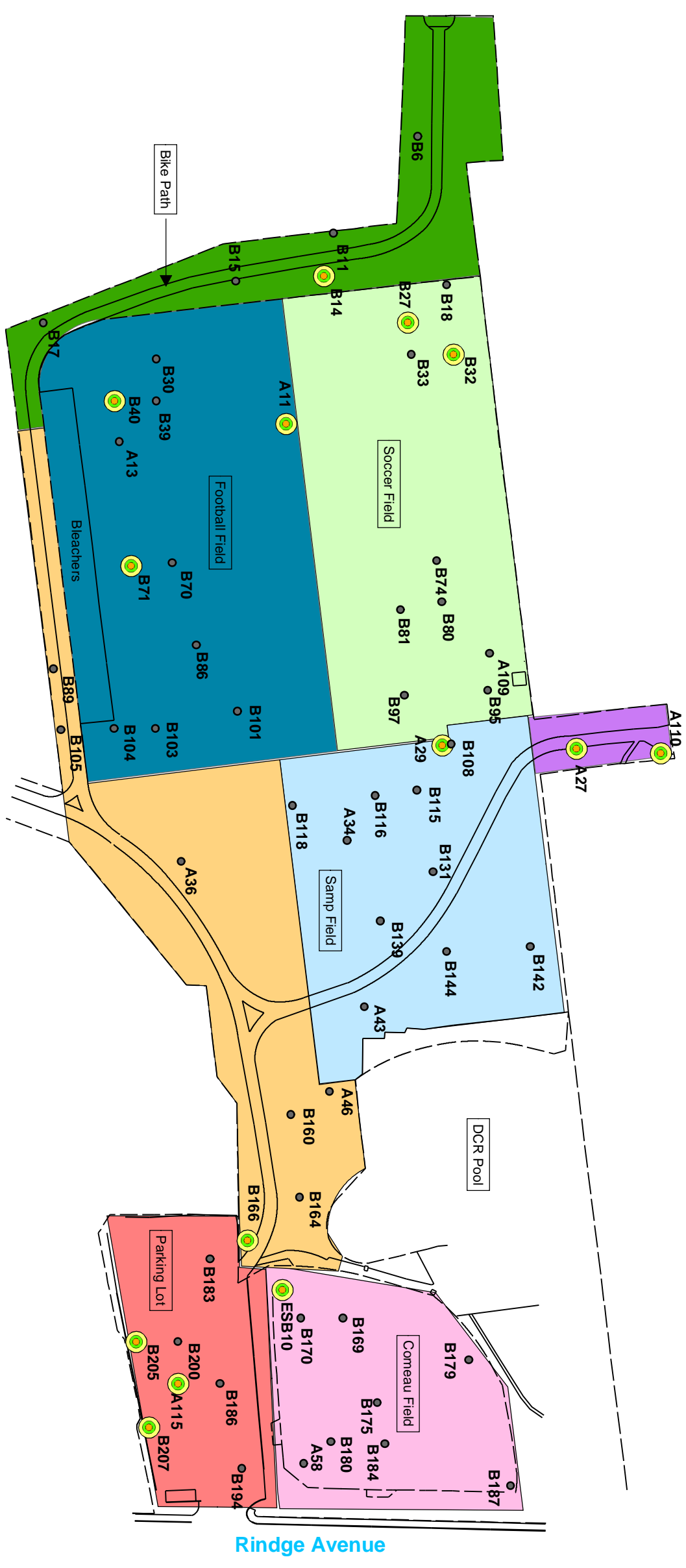


MBTA tunnel alignment from MBTA survey and EnviroSense GPR survey. Tunnel alignment approximate.





# DRAFT



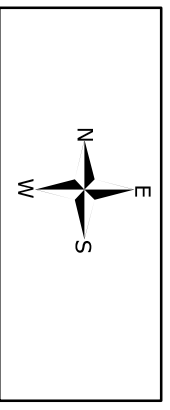
**BERMAN ENGINEERING**  
**Environmental Health & Engineering, Inc.**  
 60 Wells Avenue  
 Newton, MA 02459-3210

TEL: 617-964-8550 FAX: 617-964-8556

- Legend**
- Berman composite sample
  - locations with no asbestos detected
  - Berman composite sample locations with detected asbestos
- |   |   |
|---|---|
| <span style="display: inline-block; width: 15px; height: 10px; background-color: red; border: 1px solid black;"></span> Zone A    | <span style="display: inline-block; width: 15px; height: 10px; background-color: lightgreen; border: 1px solid black;"></span> Zone E |
| <span style="display: inline-block; width: 15px; height: 10px; background-color: green; border: 1px solid black;"></span> Zone B  | <span style="display: inline-block; width: 15px; height: 10px; background-color: blue; border: 1px solid black;"></span> Zone F       |
| <span style="display: inline-block; width: 15px; height: 10px; background-color: pink; border: 1px solid black;"></span> Zone C   | <span style="display: inline-block; width: 15px; height: 10px; background-color: lightblue; border: 1px solid black;"></span> Zone G  |
| <span style="display: inline-block; width: 15px; height: 10px; background-color: purple; border: 1px solid black;"></span> Zone D | <span style="display: inline-block; width: 15px; height: 10px; background-color: orange; border: 1px solid black;"></span> Zone H     |

**Plan Notes:**  
 Samples for US EPA Elutriator Method obtained from soils at 0 to 3 feet deep. Base map/CAD drawing obtained from Brown, Richardson, and Rowe. Additional annotation and data layers created by E&E based upon data from field investigations. Created using ESRI ArcView and ArcMap.

**CITY OF CAMBRIDGE**  
**RUSSELL FIELD**



DESIGNED: ADS	CHECKED: KAM
APPROVED: CDC	
DATE: MARCH 2004	
SCALE: NTS	
CAD PATH NAME: P:\10515\AutoCAD\BermanAnalysis&Zonation\2003BermanAnalysis_fill_033004	

**DRAWING TITLE:**  
**SAMPLE COMPOSITE ZONES FOR EPA ELUTRIATOR METHOD**

**DRAWING NO.:**  
**9**

V:\Project\10515\MCP\_Tfig\3003 Berman\_Zonation.mxd