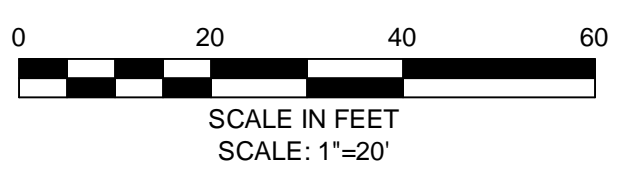


- CONSTRUCTION NOTES:**
1. WORK IN WHITTEMORE AVENUE SHALL MEET THE REQUIREMENTS OF THE CITY OF CAMBRIDGE DEPARTMENT OF PUBLIC WORKS.
 2. CONTRACTOR SHALL ADJUST EXISTING UTILITY COVERS AND CASTINGS TO REGRADED SURFACES.
 3. ALL VERTICAL GRANITE CURBING WITHIN SIDEWALK AND COLD PLANE LIMITS SHALL BE REMOVED AND RESET UNLESS OTHERWISE NOTED.
 4. EXISTING SIGNS LOCATED WITHIN PROPOSED PEDESTRIAN RAMP SHALL BE RELOCATED OUTSIDE OF PEDESTRIAN RAMP.
 5. CONTRACTOR TO ADJUST TREE PIT OPENINGS AS NECESSARY TO MAINTAIN A MINIMUM 3'-0" WIDE SIDEWALK BETWEEN TREE PIT AND BACK OF SIDEWALK.
 6. CONTRACTOR SHALL MAINTAIN A MINIMUM DISTANCE OF 3'-0" FROM THE BACK OF SIDEWALK TO ANY OBJECT INCLUDING BUT NOT LIMITED TO: SIGN POSTS, HYDRANTS, AND UTILITY, AND LIGHT POLES.
 7. ALL SIGN POSTS WITHIN PROJECT AREA TO BE REPLACED AND EXISTING SIGN TO BE RESET.
 8. TREES TO REMAIN SHALL BE PROTECTED THROUGHOUT CONSTRUCTION.



**NOT FOR
CONSTRUCTION
95% QA/QC**

PLOT DATE=11/5/2009 8:40:35 AM USER=SEAN JUDGE FILENAME=C:\clients\Cambridge\MA\2008288 - CAM 400 Sewer Separation\Civil\Whittemore Ave\2008288-03-Whittemore const.dwg

SEA
SEA CONSULTANTS INC.
Scientists/Engineers/Architects
CAMBRIDGE, MASSACHUSETTS CONCORD, NEW HAMPSHIRE
ROCKY HILL, CONNECTICUT AUGUSTA, MAINE
FRAMINGHAM, MASSACHUSETTS

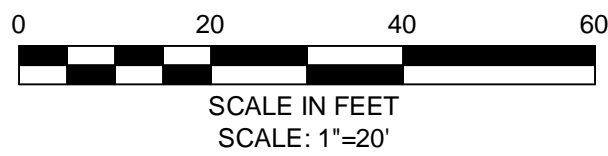
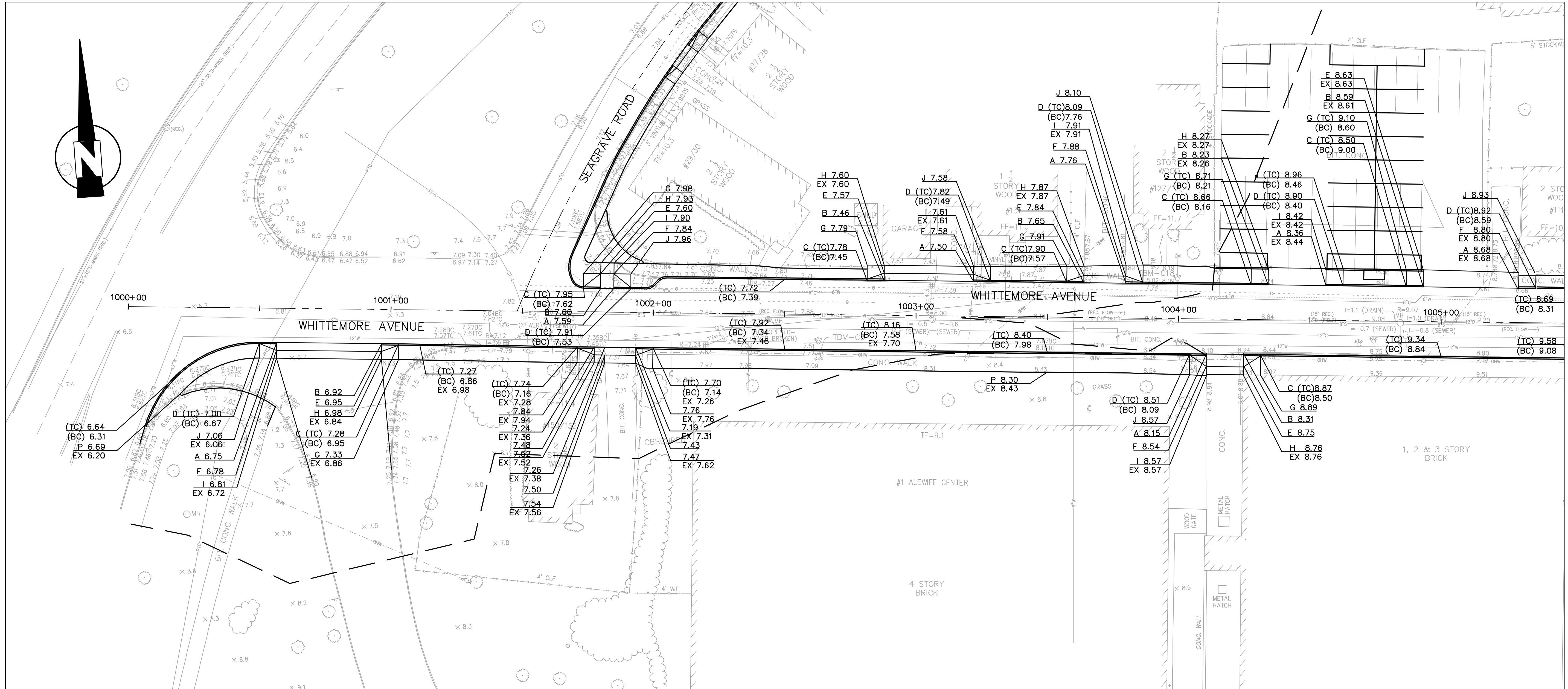
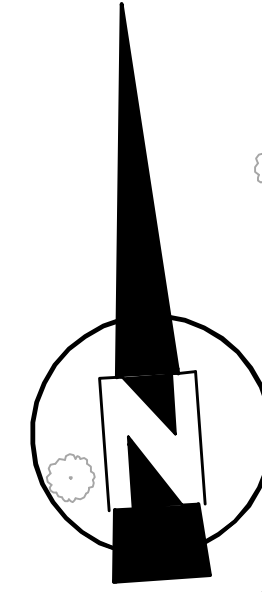
MWH
BOSTON
MASSACHUSETTS

Scale	AS NOTED		
Date	NOVEMBER 2009		
Job No.	2008288-03-A		
Designed by	TAL		
Drawn by	TAL		
Checked by	SFJ	No.	Description
Approved by	JJS		Date
			REVISIONS



Client	CITY OF CAMBRIDGE, MA
Project	ALEWIFE BROOK FLOATABLES CONTROL (CONTRACT 4) AND CAM 400 SEWER SEPARATION PROJECT (CONTRACT 13)
Drawing	ROADWAY - CONSTRUCTION PLAN STA 1000+00 TO 1005+00

Sheet	R-2
File No.	--- OF XX



**NOT FOR
CONSTRUCTION
95% QA/QC**

PLOT DATE= 11/5/2009 8:40:39 AM USER=SEAN JUDGE FILENAME=G:\Clients\Cambridge\Whittemore Ave\2008288-03\Whittemore grading.dwg

SEA
SEA CONSULTANTS INC.
 Scientists/Engineers/Architects
 CAMBRIDGE, MASSACHUSETTS CONCORD, NEW HAMPSHIRE
 ROCKY HILL, CONNECTICUT AUGUSTA, MAINE
 FRAMINGHAM, MASSACHUSETTS

MWH
 BOSTON
 MASSACHUSETTS

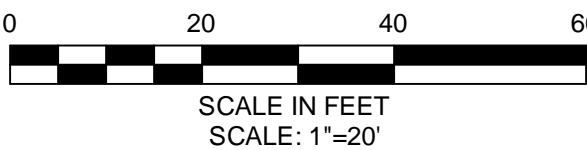
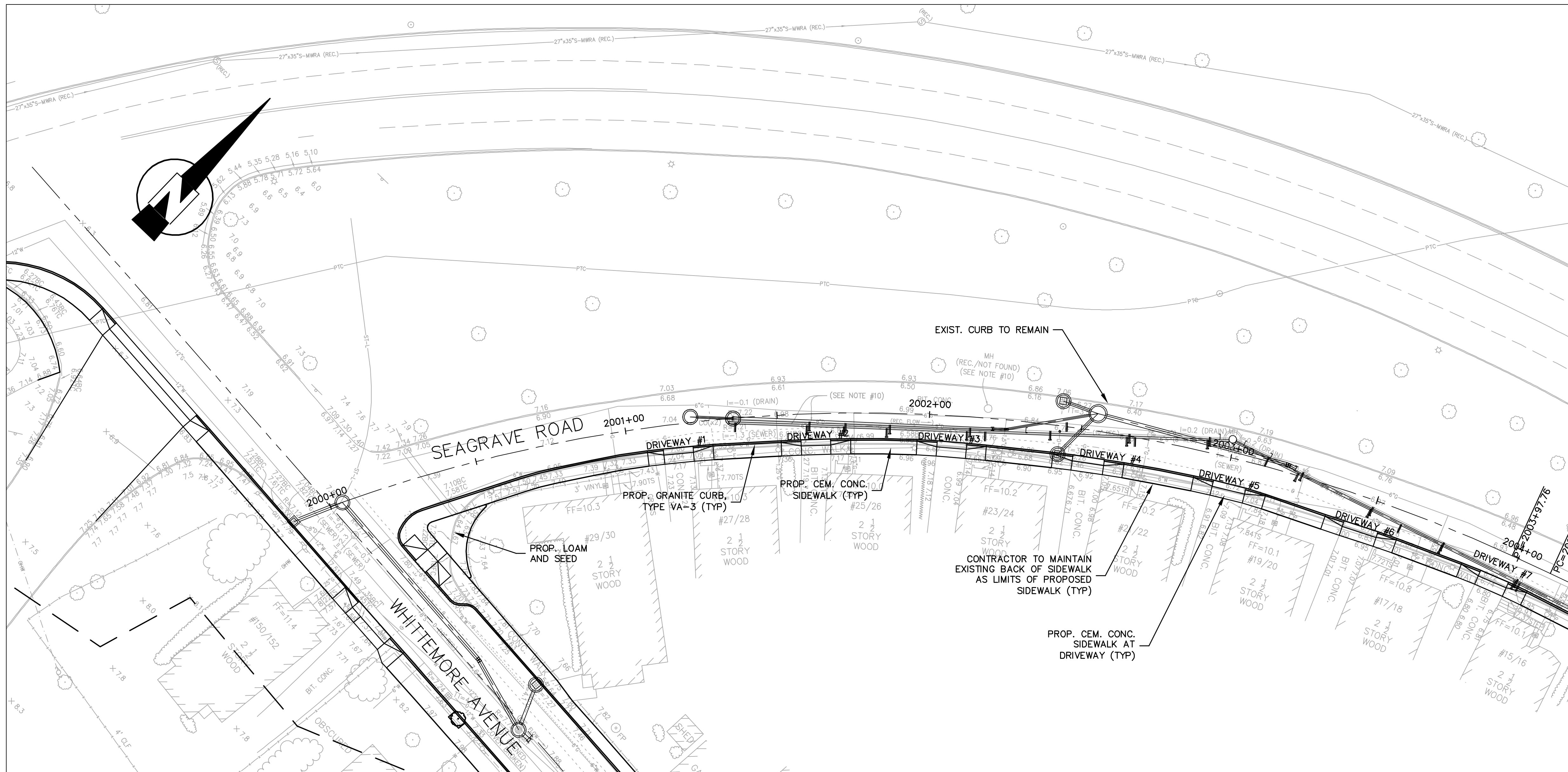
Scale	AS NOTED		
Date	NOVEMBER 2009		
Job No.	2008288-03-A		
Designed by	TAL		
Drawn by	TAL		
Checked by	SFJ	No.	Description
Approved by	JJS		Date



Client	CITY OF CAMBRIDGE, MA
Project	ALEWIFE BROOK FLOATABLES CONTROL (CONTRACT 4) AND CAM 400 SEWER SEPARATION PROJECT (CONTRACT 13)
Drawing	ROADWAY - GRADING PLAN STA 1000+00 TO 1005+00

Sheet	R-5
File No.	--- OF XX

PLOT DATE=11/5/2009 8:40:59 AM USER=SEAN JUDGE FILENAME=C:\clients\Cambridge\MA\2008288-03-Seagrave const.dwg



- CONSTRUCTION NOTES:**
1. WORK IN SEAGRAVE ROAD SHALL MEET THE REQUIREMENTS OF THE CITY OF CAMBRIDGE DEPARTMENT OF PUBLIC WORKS.
 2. CONTRACTOR SHALL ADJUST EXISTING UTILITY COVERS AND CASTINGS TO REGRADED SURFACES.
 3. ALL VERTICAL GRANITE CURBING WITHIN SIDEWALK AND COLD PLANE LIMITS SHALL BE REMOVED AND RESET UNLESS OTHERWISE NOTED.
 4. EXISTING SIGNS LOCATED WITHIN PROPOSED PEDESTRIAN RAMPS SHALL BE RELOCATED OUTSIDE OF PEDESTRIAN RAMPS.
 5. CONTRACTOR TO ADJUST TREE PIT OPENINGS AS NECESSARY TO MAINTAIN A MINIMUM 3'-0" WIDE SIDEWALK BETWEEN TREE PIT AND BACK OF SIDEWALK.
 6. CONTRACTOR SHALL MAINTAIN A MINIMUM DISTANCE OF 3'-0" FROM THE BACK OF SIDEWALK TO ANY OBJECT INCLUDING BUT NOT LIMITED TO: SIGN POSTS, HYDRANTS, AND UTILITY, AND LIGHT POLES.
 7. ALL SIGN POSTS WITHIN PROJECT AREA TO BE REPLACED AND EXISTING SIGN TO BE RESET.
 8. TREES TO REMAIN SHALL BE PROTECTED THROUGHOUT CONSTRUCTION.

**NOT FOR
CONSTRUCTION
95% QA/QC**

SEA
SEA CONSULTANTS INC.
Scientists/Engineers/Architects
CAMBRIDGE, MASSACHUSETTS CONCORD, NEW HAMPSHIRE
ROCKY HILL, CONNECTICUT AUGUSTA, MAINE
FRAMINGHAM, MASSACHUSETTS

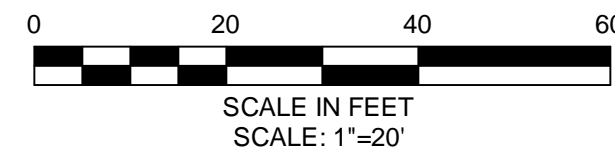
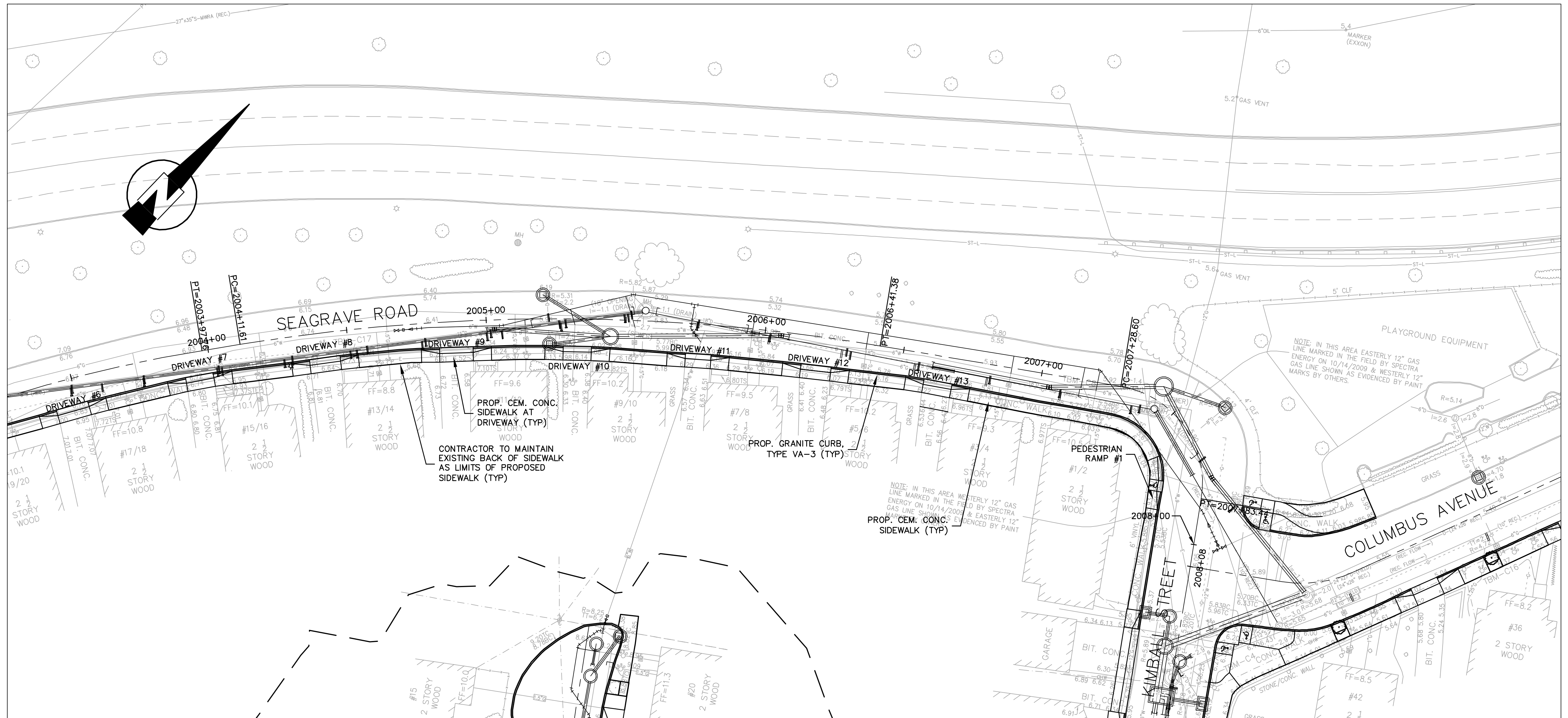
MWH
BOSTON
MASSACHUSETTS

Scale	AS NOTED			
Date	NOVEMBER 2009			
Job No.	2008288.03-A			
Designed by	TAL			
Drawn by	TAL			
Checked by	SFJ	No.	Description	Date
Approved by	JJS		REVISIONS	



Client	CITY OF CAMBRIDGE, MA
Project	ALEWIFE BROOK FLOATABLES CONTROL (CONTRACT 4) AND CAM 400 SEWER SEPARATION PROJECT (CONTRACT 13)
Drawing	ROADWAY - CONSTRUCTION PLAN STA 2000+00 TO 2004+00

Sheet	R-15
File No.	--- OF XX

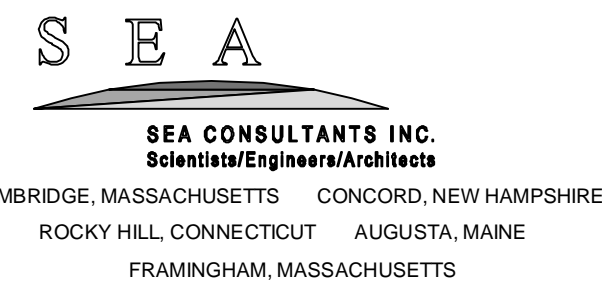


CONSTRUCTION NOTES:

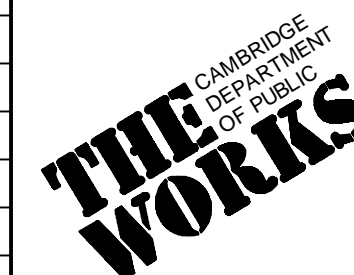
1. WORK IN SEAGRAVE ROAD SHALL MEET THE REQUIREMENTS OF THE CITY OF CAMBRIDGE DEPARTMENT OF PUBLIC WORKS.
2. CONTRACTOR SHALL ADJUST EXISTING UTILITY COVERS AND CASTINGS TO REGRADED SURFACES.
3. ALL VERTICAL GRANITE CURBING WITHIN SIDEWALK AND COLD PLANE LIMITS SHALL BE REMOVED AND RESET UNLESS OTHERWISE NOTED.
4. EXISTING SIGNS LOCATED WITHIN PROPOSED PEDESTRIAN RAMPS SHALL BE RELOCATED OUTSIDE OF PEDESTRIAN RAMPS.
5. CONTRACTOR TO ADJUST TREE PIT OPENINGS AS NECESSARY TO MAINTAIN A MINIMUM 3'-0" WIDE SIDEWALK BETWEEN TREE PIT AND BACK OF SIDEWALK.
6. CONTRACTOR SHALL MAINTAIN A MINIMUM DISTANCE OF 3'-0" FROM THE BACK OF SIDEWALK TO ANY OBJECT INCLUDING BUT NOT LIMITED TO: SIGN POSTS, HYDRANTS, AND UTILITY, AND LIGHT POLES.
7. ALL SIGN POSTS WITHIN PROJECT AREA TO BE REPLACED AND EXISTING SIGN TO BE RESET.
8. TREES TO REMAIN SHALL BE PROTECTED THROUGHOUT CONSTRUCTION.

**NOT FOR
CONSTRUCTION
95% QA/QC**

PLOT DATE= 11/5/2009 8:41:05 AM USER=SEAN JUDGE FILENAME=C:\clients\Cambridge MA\2008288 - CAM 400 Sewer Separation\Civil\Seagrave Rd\2008288.03-Seagrave const.dwg

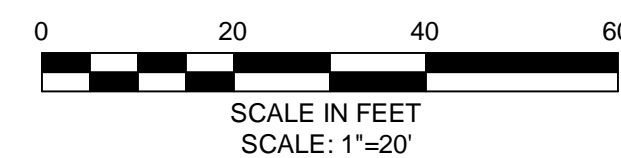
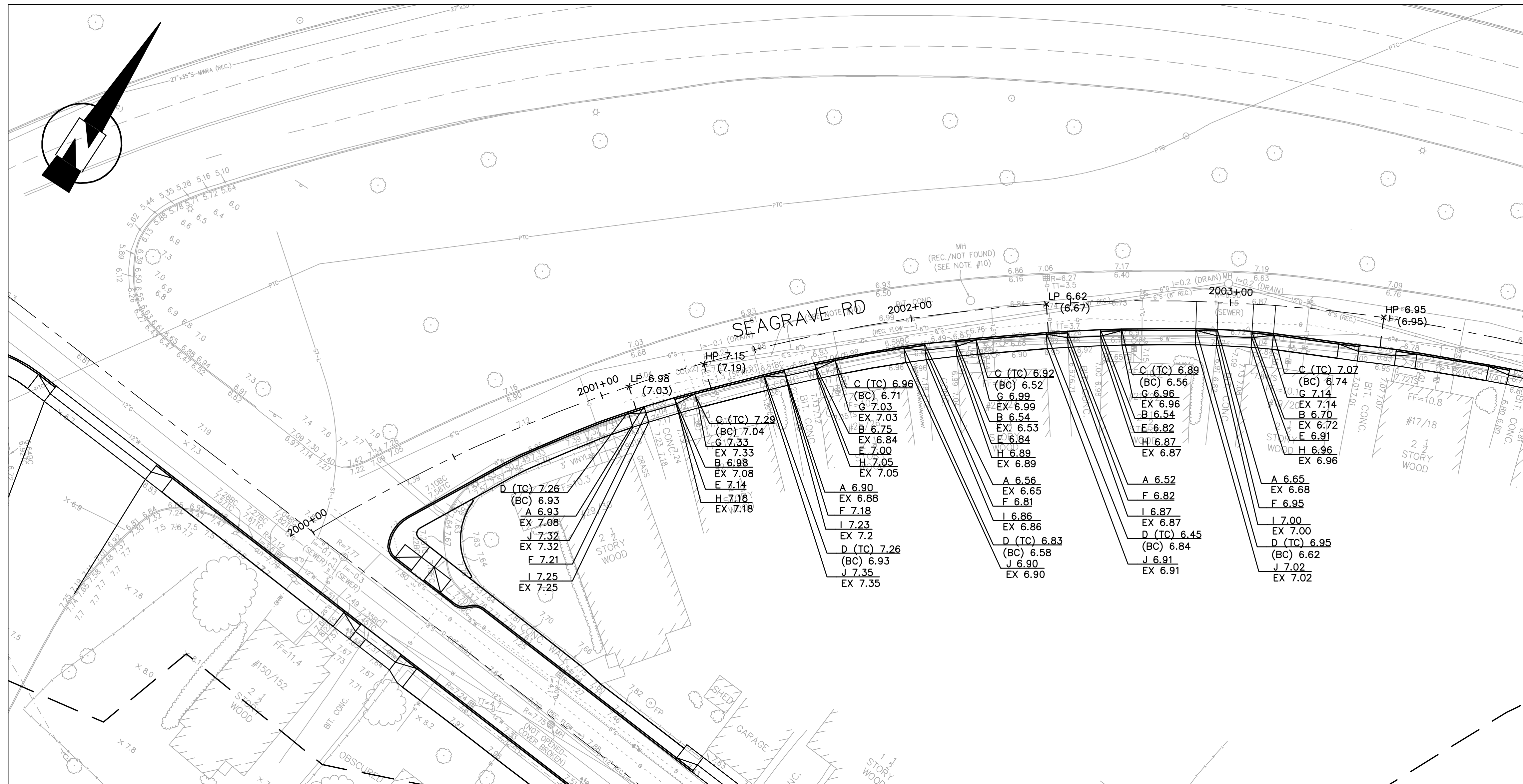


Scale	AS NOTED		
Date	NOVEMBER 2009		
Job No.	2008288.03-A		
Designed by	TAL		
Drawn by	TAL		
Checked by	SFJ	No.	Description
Approved by	JJS		Date
			REVISIONS



Client	CITY OF CAMBRIDGE, MA
Project	ALEWIFE BROOK FLOATABLES CONTROL (CONTRACT 4) AND CAM 400 SEWER SEPARATION PROJECT (CONTRACT 13)
Drawing	ROADWAY - CONSTRUCTION PLAN STA 2004+00 TO 2008+08

Sheet	R-16
File No.	--- OF XX



**NOT FOR
CONSTRUCTION
95% QA/QC**

PLOT DATE=11/5/2009 8:41:26 AM USER=SEAN JUDGE FILENAME=C:\clients\Cambridge\MA\2008288 - CAM 400 Sewer Separation\Civil\Seagrave Rd\2008288.03-Seagrave grading.dwg

SEA
SEA CONSULTANTS INC.
Scientists/Engineers/Architects
CAMBRIDGE, MASSACHUSETTS CONCORD, NEW HAMPSHIRE
ROCKY HILL, CONNECTICUT AUGUSTA, MAINE
FRAMINGHAM, MASSACHUSETTS

MWH
BOSTON
MASSACHUSETTS

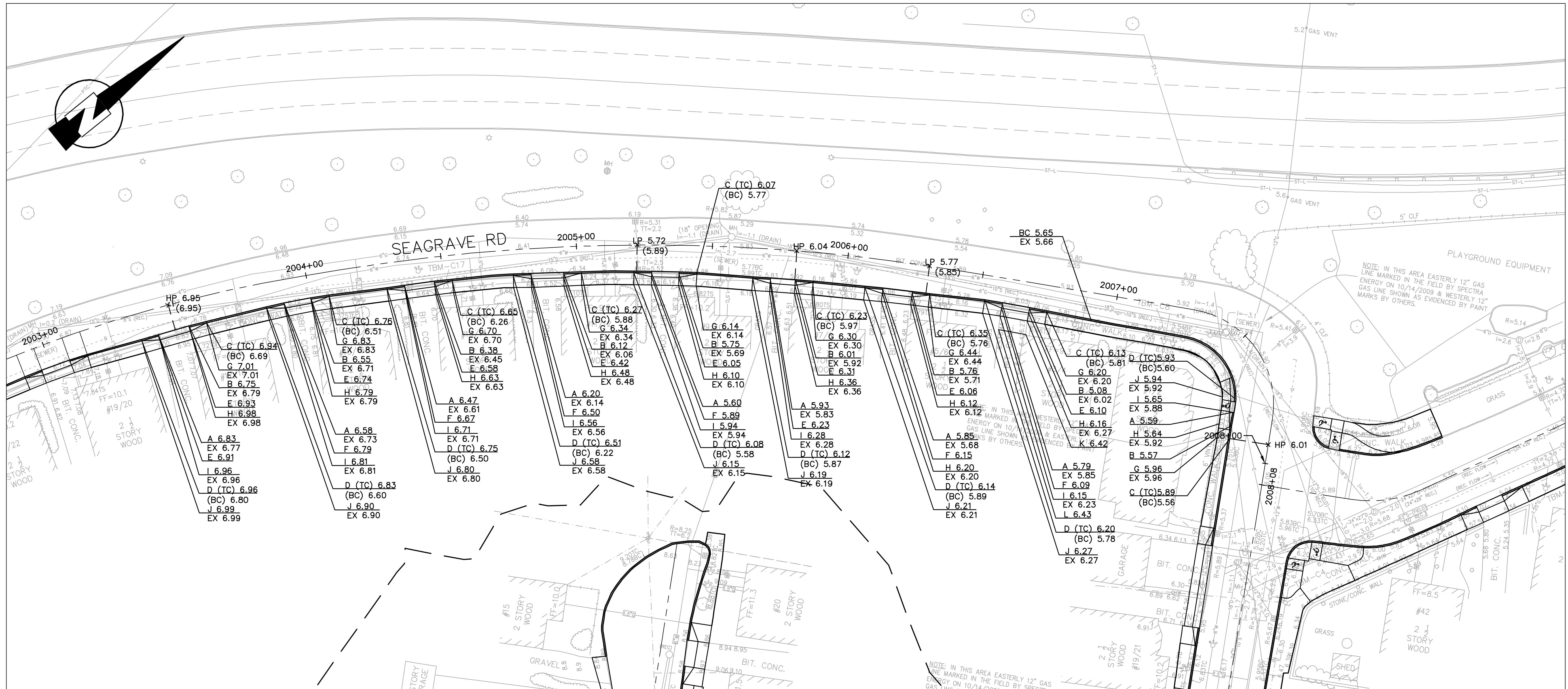
Scale	AS NOTED			
Date	NOVEMBER 2009			
Job No.	2008288.03-A			
Designed by	TAL			
Drawn by	TAL			
Checked by	SFJ	No.	Description	Date
Approved by	JJS		REVISIONS	

THE WORKS
CAMBRIDGE
DEPARTMENT
OF PUBLIC
WORKS

Client	CITY OF CAMBRIDGE, MA
Project	ALEWIFE BROOK FLOATABLES CONTROL (CONTRACT 4) AND CAM 400 SEWER SEPARATION PROJECT (CONTRACT 13)
Drawing	ROADWAY - GRADING PLAN STA 2000+00 TO 2004+00

Sheet	R-17
File No.	--- OF XX

PLOT DATE=11/5/2009 8:41:32 AM USER=SEAN JUDGE FILENAME=C:\clients\Cambridge\MA\2008288 - CAM 400 Sewer Separation\Civil\Seagrave Rd\2008288.03-Seagrave grading.dwg

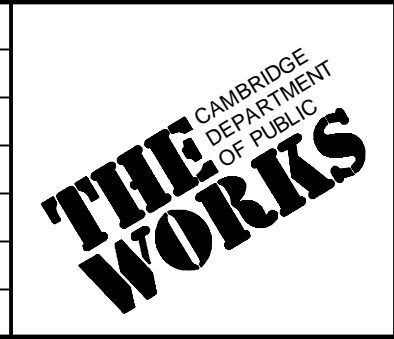


**NOT FOR
CONSTRUCTION
95% QA/QC**

SEA
SEA CONSULTANTS INC.
Scientists/Engineers/Architects
CAMBRIDGE, MASSACHUSETTS CONCORD, NEW HAMPSHIRE
ROCKY HILL, CONNECTICUT AUGUSTA, MAINE
FRAMMINGHAM, MASSACHUSETTS

MWH
BOSTON
MASSACHUSETTS

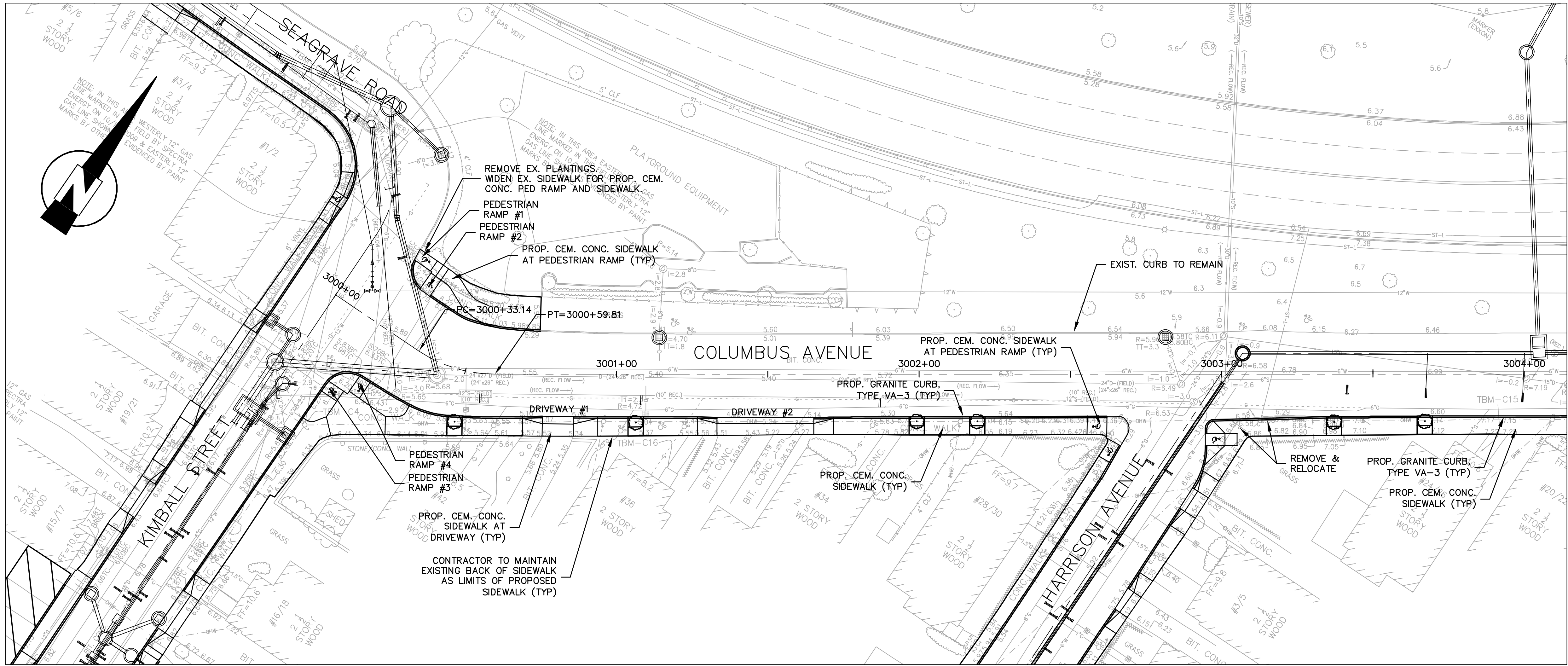
Scale	AS NOTED		
Date	NOVEMBER 2009		
Job No.	2008288.03-A		
Designed by	TAL		
Drawn by	TAL		
Checked by	SFJ	No.	Description
Approved by	JJS		Date



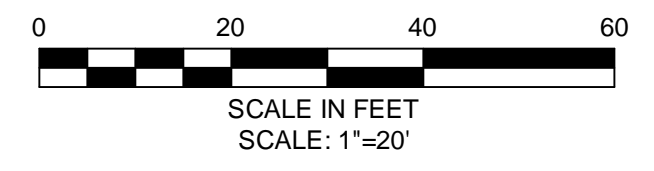
Client	CITY OF CAMBRIDGE, MA
Project	ALEWIFE BROOK FLOATABLES CONTROL (CONTRACT 4) AND CAM 400 SEWER SEPARATION PROJECT (CONTRACT 13)
Drawing	ROADWAY - GRADING PLAN STA 2004+00 TO 2008+08

Sheet	R-18
File No.	--- OF XX

PLOT DATE=11/5/2009 8:41:58 AM USER=SEAN JUDGE FILENAME=C:_clients\Cambri\Cambridge MA\2008288 - CAM 400 Sewer Separation\Civil\Columbus Ave\2008288.03-Columbus const.dwg



- CONSTRUCTION NOTES:**
1. WORK IN COLUMBUS AVENUE SHALL MEET THE REQUIREMENTS OF THE CITY OF CAMBRIDGE DEPARTMENT OF PUBLIC WORKS.
 2. CONTRACTOR SHALL ADJUST EXISTING UTILITY COVERS AND CASTINGS TO REGRADED SURFACES.
 3. ALL VERTICAL GRANITE CURBING WITHIN SIDEWALK AND COLD PLANE LIMITS SHALL BE REMOVED AND RESET UNLESS OTHERWISE NOTED.
 4. EXISTING SIGNS LOCATED WITHIN PROPOSED PEDESTRIAN RAMPS SHALL BE RELOCATED OUTSIDE OF PEDESTRIAN RAMPS.
 5. CONTRACTOR TO ADJUST TREE PIT OPENINGS AS NECESSARY TO MAINTAIN A MINIMUM 3'-0" WIDE SIDEWALK BETWEEN TREE PIT AND BACK OF SIDEWALK.
 6. CONTRACTOR SHALL MAINTAIN A MINIMUM DISTANCE OF 3'-0" FROM THE BACK OF SIDEWALK TO ANY OBJECT INCLUDING BUT NOT LIMITED TO: SIGN POSTS, HYDRANTS, AND UTILITY, AND LIGHT POLES.
 7. ALL SIGN POSTS WITHIN PROJECT AREA TO BE REPLACED AND EXISTING SIGN TO BE RESET.
 8. TREES TO REMAIN SHALL BE PROTECTED THROUGHOUT CONSTRUCTION.



**NOT FOR
CONSTRUCTION
95% QA/QC**

SEA
SEA CONSULTANTS INC.
Scientists/Engineers/Architects
CAMBRIDGE, MASSACHUSETTS CONCORD, NEW HAMPSHIRE
ROCKY HILL, CONNECTICUT AUGUSTA, MAINE
FRAMINGHAM, MASSACHUSETTS

MWH
BOSTON
MASSACHUSETTS

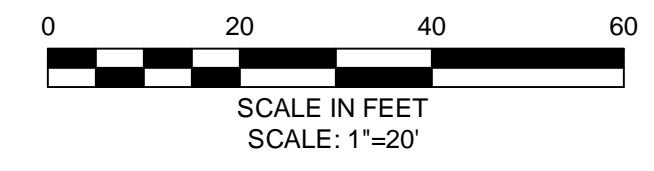
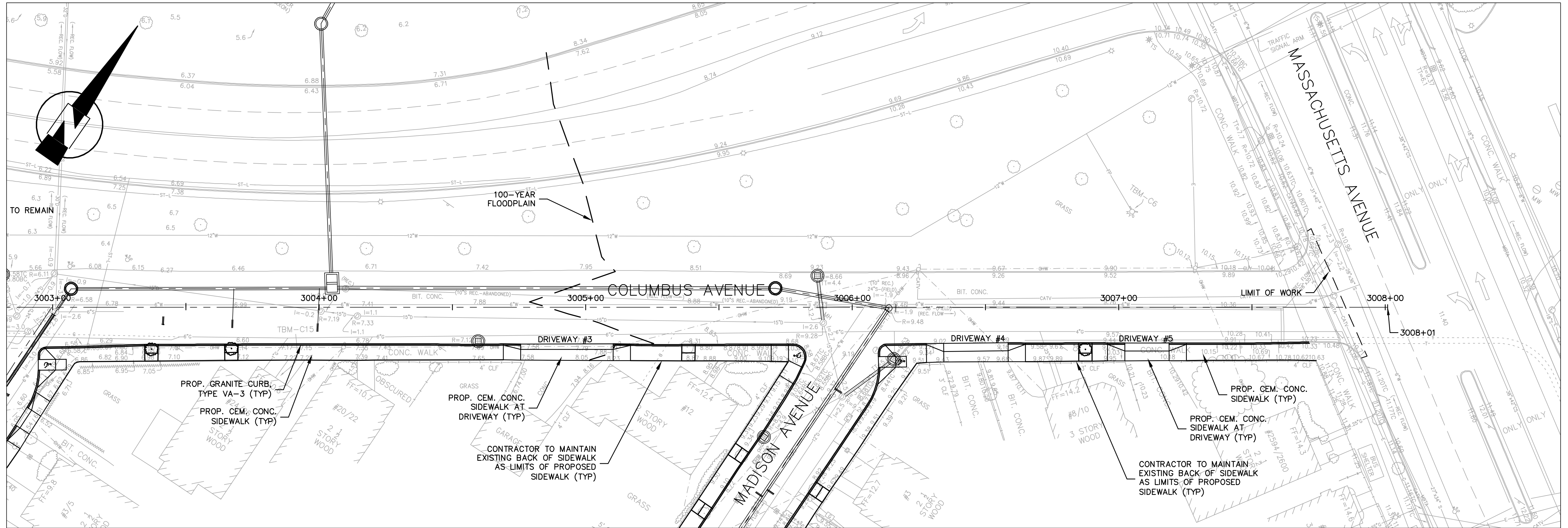
Scale	AS NOTED			
Date	NOVEMBER 2009			
Job No.	2008288.03-A			
Designed by	TAL			
Drawn by	TAL			
Checked by	SFJ	No.	Description	Date
Approved by	JJS		REVISIONS	



Client	CITY OF CAMBRIDGE, MA
Project	ALEWIFE BROOK FLOATABLES CONTROL (CONTRACT 4) AND CAM 400 SEWER SEPARATION PROJECT (CONTRACT 13)
Drawing	ROADWAY - CONSTRUCTION PLAN STA 3000+00 TO 3004+00

Sheet	R-23
File No.	--- OF XX

PLOT DATE=11/5/2009 8:42:04 AM USER=SEAN JUDGE FILENAME=C:\clients\Cambridge\MA\2008288.03-Columbus const.dwg



- CONSTRUCTION NOTES:**
1. WORK IN COLUMBUS AVENUE SHALL MEET THE REQUIREMENTS OF THE CITY OF CAMBRIDGE DEPARTMENT OF PUBLIC WORKS.
 2. CONTRACTOR SHALL ADJUST EXISTING UTILITY COVERS AND CASTINGS TO REGRADED SURFACES.
 3. ALL VERTICAL GRANITE CURBING WITHIN SIDEWALK AND COLD PLANE LIMITS SHALL BE REMOVED AND RESET UNLESS OTHERWISE NOTED.
 4. EXISTING SIGNS LOCATED WITHIN PROPOSED PEDESTRIAN RAMPS SHALL BE RELOCATED OUTSIDE OF PEDESTRIAN RAMPS.
 5. CONTRACTOR TO ADJUST TREE PIT OPENINGS AS NECESSARY TO MAINTAIN A MINIMUM 3'-0" WIDE SIDEWALK BETWEEN TREE PIT AND BACK OF SIDEWALK.
 6. CONTRACTOR SHALL MAINTAIN A MINIMUM DISTANCE OF 3'-0" FROM THE BACK OF SIDEWALK TO ANY OBJECT INCLUDING BUT NOT LIMITED TO: SIGN POSTS, HYDRANTS, AND UTILITY, AND LIGHT POLES.
 7. ALL SIGN POSTS WITHIN PROJECT AREA TO BE REPLACED AND EXISTING SIGN TO BE RESET.
 8. TREES TO REMAIN SHALL BE PROTECTED THROUGHOUT CONSTRUCTION.

**NOT FOR
CONSTRUCTION
95% QA/QC**

SEA
SEA CONSULTANTS INC.
Scientists/Engineers/Architects
CAMBRIDGE, MASSACHUSETTS CONCORD, NEW HAMPSHIRE
ROCKY HILL, CONNECTICUT AUGUSTA, MAINE
FRAMINGHAM, MASSACHUSETTS

MWH
BOSTON
MASSACHUSETTS

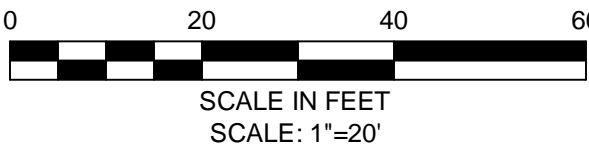
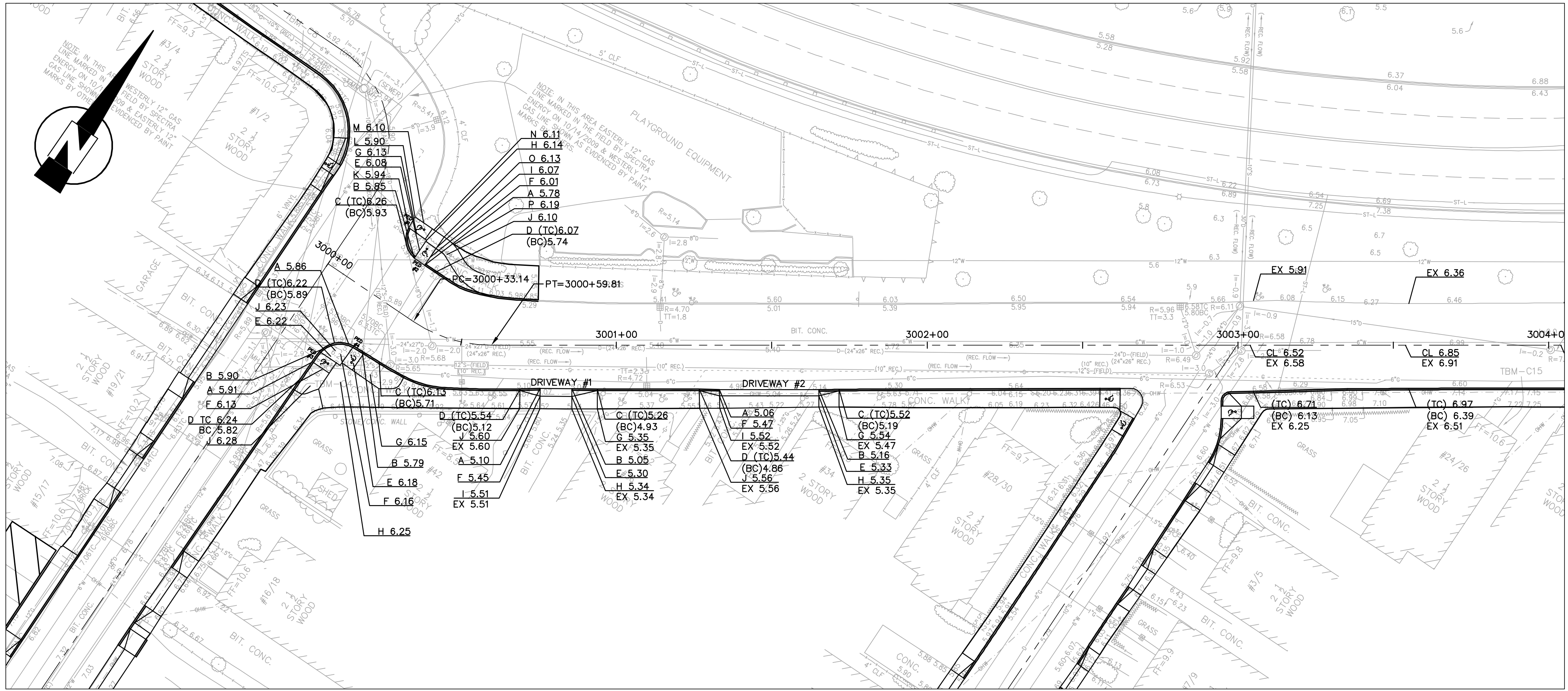
Scale	AS NOTED		
Date	NOVEMBER 2009		
Job No.	2008288.03-A		
Designed by	TAL		
Drawn by	TAL		
Checked by	SFJ	No.	Description
Approved by	JJS		REVISIONS



Client	CITY OF CAMBRIDGE, MA
Project	ALEWIFE BROOK FLOATABLES CONTROL (CONTRACT 4) AND CAM 400 SEWER SEPARATION PROJECT (CONTRACT 13)
Drawing	ROADWAY - CONSTRUCTION PLAN STA 3004+00 TO 3008+01

Sheet	R-24
File No.	--- OF XX

PLOT DATE=11/5/2009 8:42:29 AM USER=SEAN JUDGE FILENAME=G:\clients\Cambridge MA\2008288 - CAM 400 Sewer Separation\Civil\Columbus Ave\2008288.03-Columbus grading.dwg

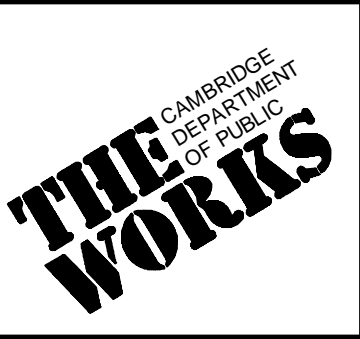


NOT FOR CONSTRUCTION
95% QA/QC

SEA
SEA CONSULTANTS INC.
Scientists/Engineers/Architects
CAMBRIDGE, MASSACHUSETTS CONCORD, NEW HAMPSHIRE
ROCKY HILL, CONNECTICUT AUGUSTA, MAINE
FRAMINGHAM, MASSACHUSETTS

MWH
BOSTON
MASSACHUSETTS

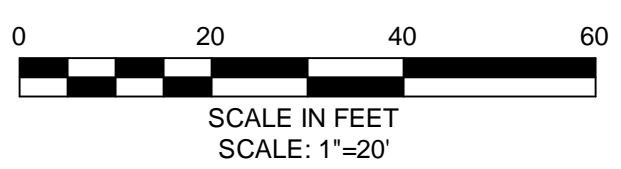
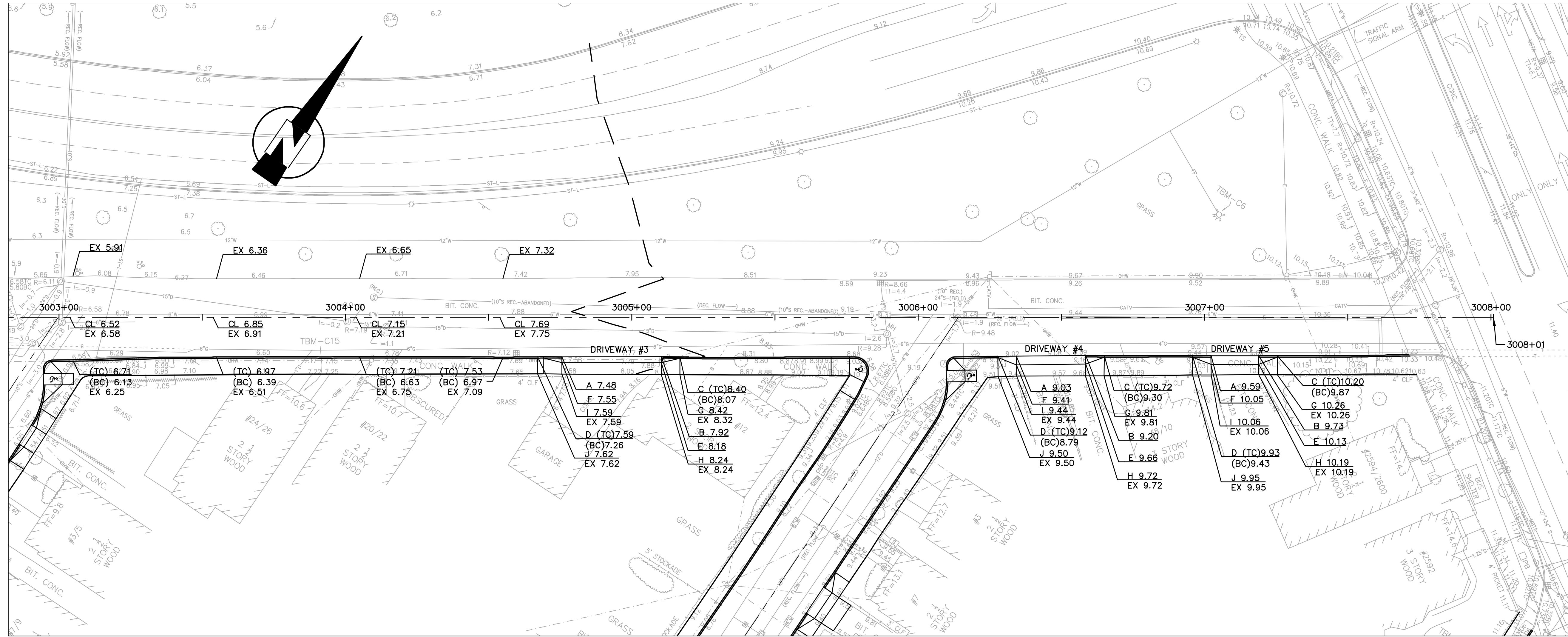
Scale	AS NOTED		
Date	NOVEMBER 2009		
Job No.	2008288.03-A		
Designed by	TAL		
Drawn by	TAL		
Checked by	SFJ	No.	Description
Approved by	JJS		Date
			REVISIONS



Client	CITY OF CAMBRIDGE, MA
Project	ALEWIFE BROOK FLOATABLES CONTROL (CONTRACT 4) AND CAM 400 SEWER SEPARATION PROJECT (CONTRACT 13)
Drawing	ROADWAY - GRADING PLAN STA 3000+00 TO 3004+00

Sheet	R-25
File No.	--- OF XX

PLOT DATE=11/5/2009 8:42:35 AM USER=SEAN JUDGE FILENAME=C:\clients\Cambidge MA\2008288 - CAM 400 Sewer Separation\Civil\Columbus Ave\2008288.03-Columbus grading.dwg

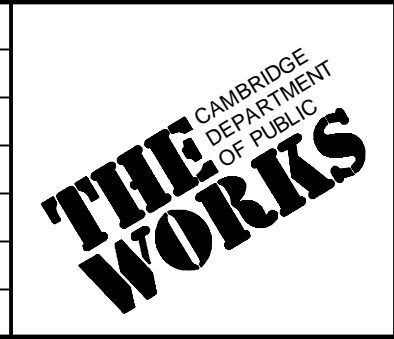


**NOT FOR
CONSTRUCTION**
95% QA/QC

SEA
SEA CONSULTANTS INC.
Scientists/Engineers/Architects
CAMBRIDGE, MASSACHUSETTS CONCORD, NEW HAMPSHIRE
ROCKY HILL, CONNECTICUT AUGUSTA, MAINE
FRAMMINGHAM, MASSACHUSETTS

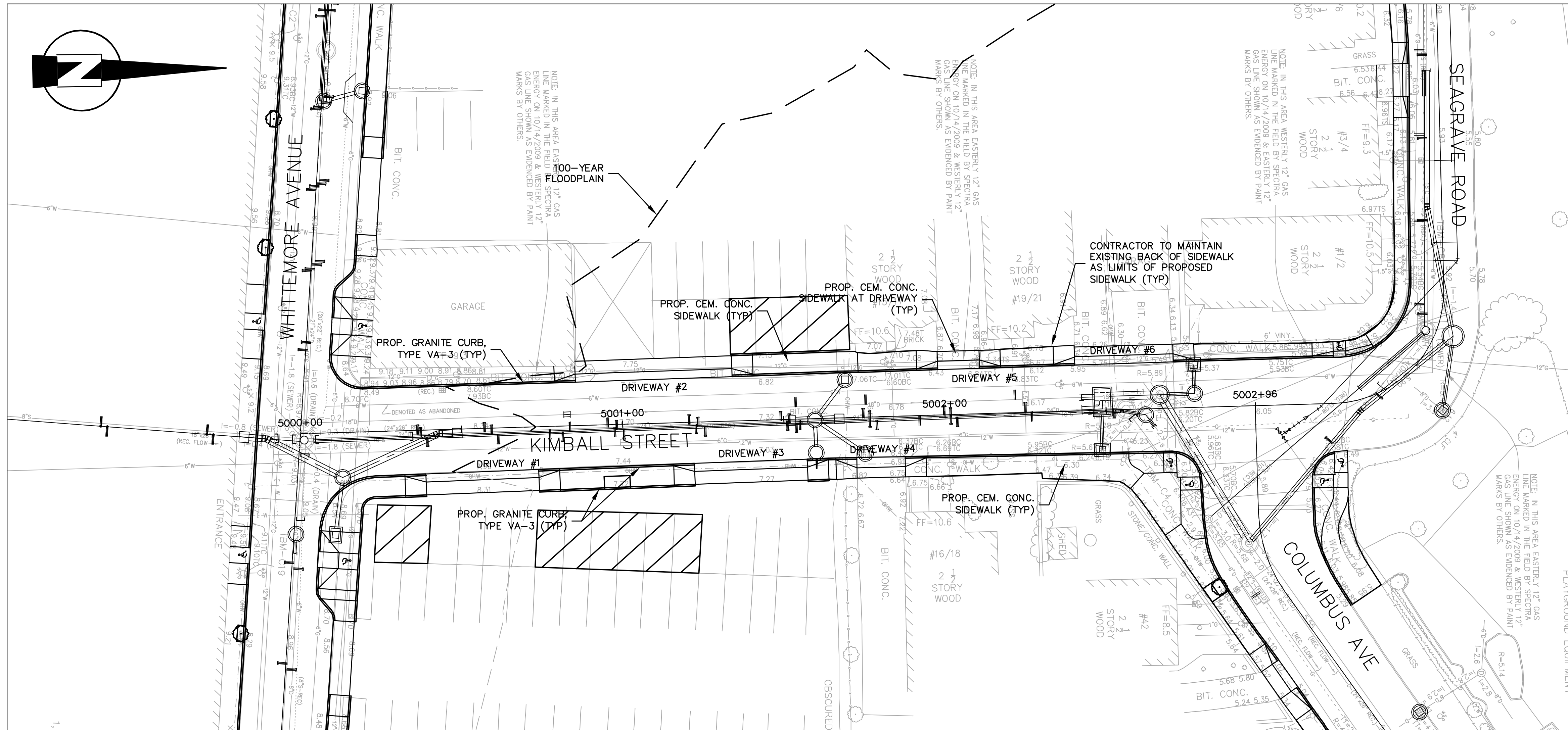
MWH
BOSTON
MASSACHUSETTS

Scale	AS NOTED		
Date	NOVEMBER 2009		
Job No.	2008288.03-A		
Designed by	TAL		
Drawn by	TAL		
Checked by	SFJ	No.	Description
Approved by	JJS		Date



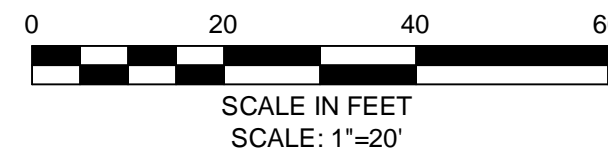
Client	CITY OF CAMBRIDGE, MA
Project	ALEWIFE BROOK FLOATABLES CONTROL (CONTRACT 4) AND CAM 400 SEWER SEPARATION PROJECT (CONTRACT 13)
Drawing	ROADWAY - GRADING PLAN STA 3004+00 TO 3008+01

Sheet	R-26
File No.	--- OF XX



CONSTRUCTION NOTES:

1. WORK IN KIMBALL STREET SHALL MEET THE REQUIREMENTS OF THE CITY OF CAMBRIDGE DEPARTMENT OF PUBLIC WORKS.
2. CONTRACTOR SHALL ADJUST EXISTING UTILITY COVERS AND CASTINGS TO REGRADED SURFACES.
3. ALL VERTICAL GRANITE CURBING WITHIN SIDEWALK AND COLD PLANE LIMITS SHALL BE REMOVED AND RESET UNLESS OTHERWISE NOTED.
4. EXISTING SIGNS LOCATED WITHIN PROPOSED PEDESTRIAN RAMPS SHALL BE RELOCATED OUTSIDE OF PEDESTRIAN RAMPS.
5. CONTRACTOR TO ADJUST TREE PIT OPENINGS AS NECESSARY TO MAINTAIN A MINIMUM 3'-0" WIDE SIDEWALK BETWEEN TREE PIT AND BACK OF SIDEWALK.
6. CONTRACTOR SHALL MAINTAIN A MINIMUM DISTANCE OF 3'-0" FROM THE BACK OF SIDEWALK TO ANY OBJECT INCLUDING BUT NOT LIMITED TO: SIGN POSTS, HYDRANTS, AND UTILITY, AND LIGHT POLES.
7. ALL SIGN POSTS WITHIN PROJECT AREA TO BE REPLACED AND EXISTING SIGN TO BE RESET.
8. TREES TO REMAIN SHALL BE PROTECTED THROUGHOUT CONSTRUCTION.

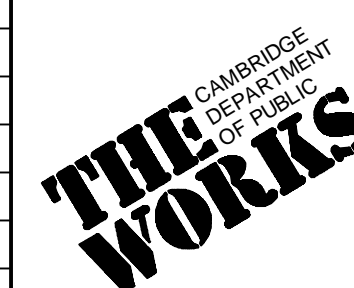


**NOT FOR
CONSTRUCTION
95% QA/QC**

PLOT DATE=11/5/2009 8:42:55 AM USER=SEAN JUDGE FILENAME=C:_clients\Cambridge\MA\2008288- CAM 400 Sewer Separation\Civil\Kimball STA5000+00-Kimball const.dwg

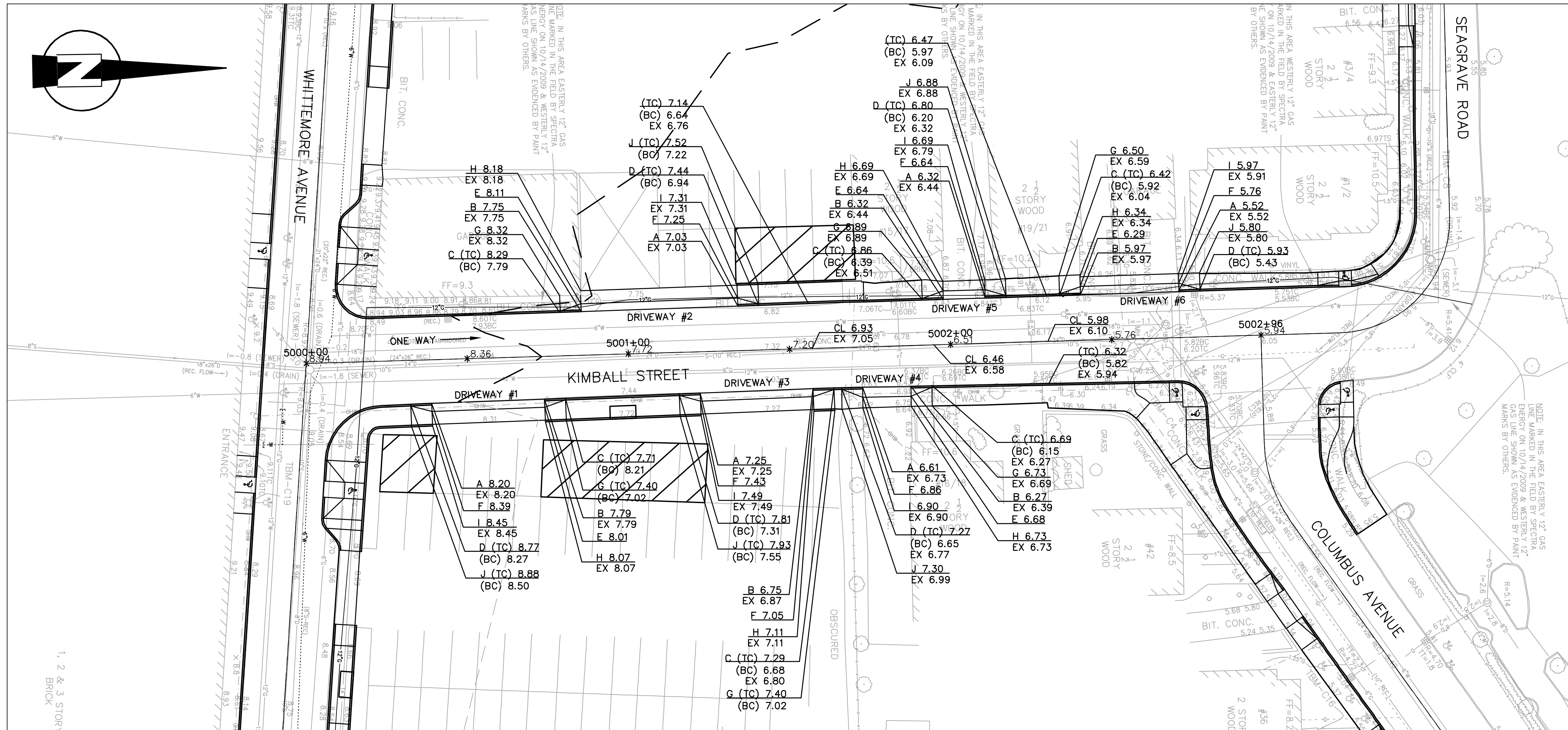


Scale	AS NOTED			
Date	NOVEMBER 2009			
Job No.	2008288.03-A			
Designed by	JRM			
Drawn by	JRM			
Checked by	SFJ	No.	Description	Date
Approved by	JJS		REVISIONS	

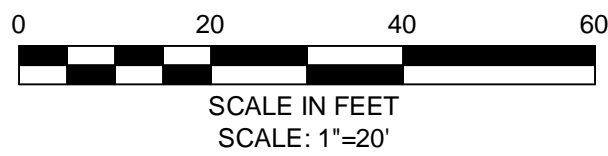


Client	CITY OF CAMBRIDGE, MA
Project	ALEWIFE BROOK FLOATABLES CONTROL (CONTRACT 4) AND CAM 400 SEWER SEPARATION PROJECT (CONTRACT 13)
Drawing	ROADWAY - CONSTRUCTION PLAN STA 5000+00 TO 5002+96

Sheet	R-35
File No.	--- OF XX



1, 2 & 3 STORY BRICK



NOT FOR CONSTRUCTION
95% QA/QC

PLOT DATE= 11/5/2009 8:43:14 AM USER=SEAN JUDGE FILENAME=C:_clients\Cambridge\MA\2008288 - CAM 400 Sewer Separation\Civil\Kimball STA2008288\03-Kimball grading.dwg

SEA
SEA CONSULTANTS INC.
Scientists/Engineers/Architects
CAMBRIDGE, MASSACHUSETTS CONCORD, NEW HAMPSHIRE
ROCKY HILL, CONNECTICUT AUGUSTA, MAINE
FRAMINGHAM, MASSACHUSETTS

MWH
BOSTON
MASSACHUSETTS

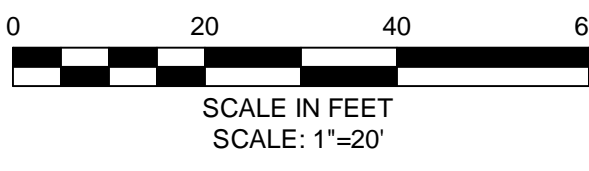
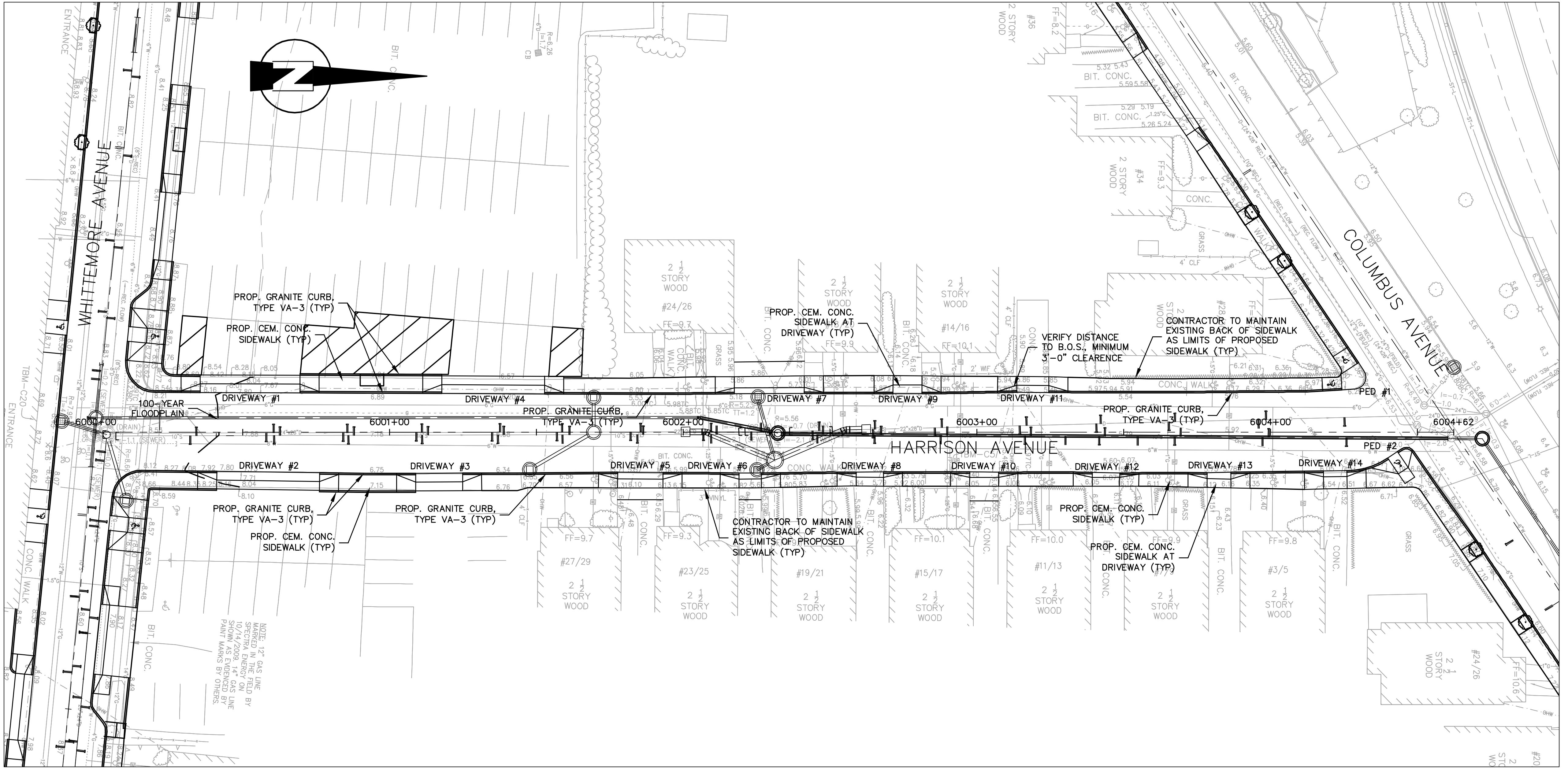
Scale	AS NOTED		
Date	NOVEMBER 2009		
Job No.	2008288.03-A		
Designed by	JRM		
Drawn by	JRM		
Checked by	SFJ	No.	Description
Approved by	JJS		Date
		REVISIONS	



Client	CITY OF CAMBRIDGE, MA
Project	ALEWIFE BROOK FLOATABLES CONTROL (CONTRACT 4) AND CAM 400 SEWER SEPARATION PROJECT (CONTRACT 13)
Drawing	ROADWAY - GRADING PLAN STA 5000+00 TO 5002+96

Sheet	R-36
File No.	--- OF XX

PLOT DATE=11/5/2009 8:43:40 AM USER=SEAN JUDGE FILENAME=C:\clients\Cambridge\Harrison Ave\2008288.03-Harrison const.dwg



- CONSTRUCTION NOTES:**
1. WORK IN HARRISON AVENUE SHALL MEET THE REQUIREMENTS OF THE CITY OF CAMBRIDGE DEPARTMENT OF PUBLIC WORKS.
 2. CONTRACTOR SHALL ADJUST EXISTING UTILITY COVERS AND CASTINGS TO REGRADED SURFACES.
 3. ALL VERTICAL GRANITE CURBING WITHIN SIDEWALK AND COLD PLANE LIMITS SHALL BE REMOVED AND RESET UNLESS OTHERWISE NOTED.
 4. EXISTING SIGNS LOCATED WITHIN PROPOSED PEDESTRIAN RAMPS SHALL BE RELOCATED OUTSIDE OF PEDESTRIAN RAMPS.
 5. CONTRACTOR TO ADJUST TREE PIT OPENINGS AS NECESSARY TO MAINTAIN A MINIMUM 3'-0" WIDE SIDEWALK BETWEEN TREE PIT AND BACK OF SIDEWALK.
 6. CONTRACTOR SHALL MAINTAIN A MINIMUM DISTANCE OF 3'-0" FROM THE BACK OF SIDEWALK TO ANY OBJECT INCLUDING BUT NOT LIMITED TO: SIGN POSTS, HYDRANTS, AND UTILITY, AND LIGHT POLES.
 7. ALL SIGN POSTS WITHIN PROJECT AREA TO BE REPLACED AND EXISTING SIGN TO BE RESET.
 8. TREES TO REMAIN SHALL BE PROTECTED THROUGHOUT CONSTRUCTION.

**NOT FOR
CONSTRUCTION
95% QA/QC**

SEA
SEA CONSULTANTS INC.
Scientists/Engineers/Architects
CAMBRIDGE, MASSACHUSETTS CONCORD, NEW HAMPSHIRE
ROCKY HILL, CONNECTICUT AUGUSTA, MAINE
FRAMMINGHAM, MASSACHUSETTS

MWH
BOSTON
MASSACHUSETTS

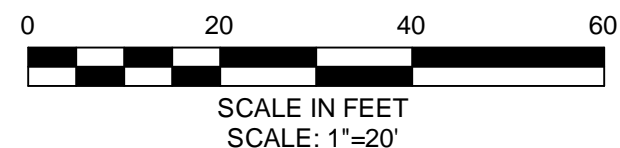
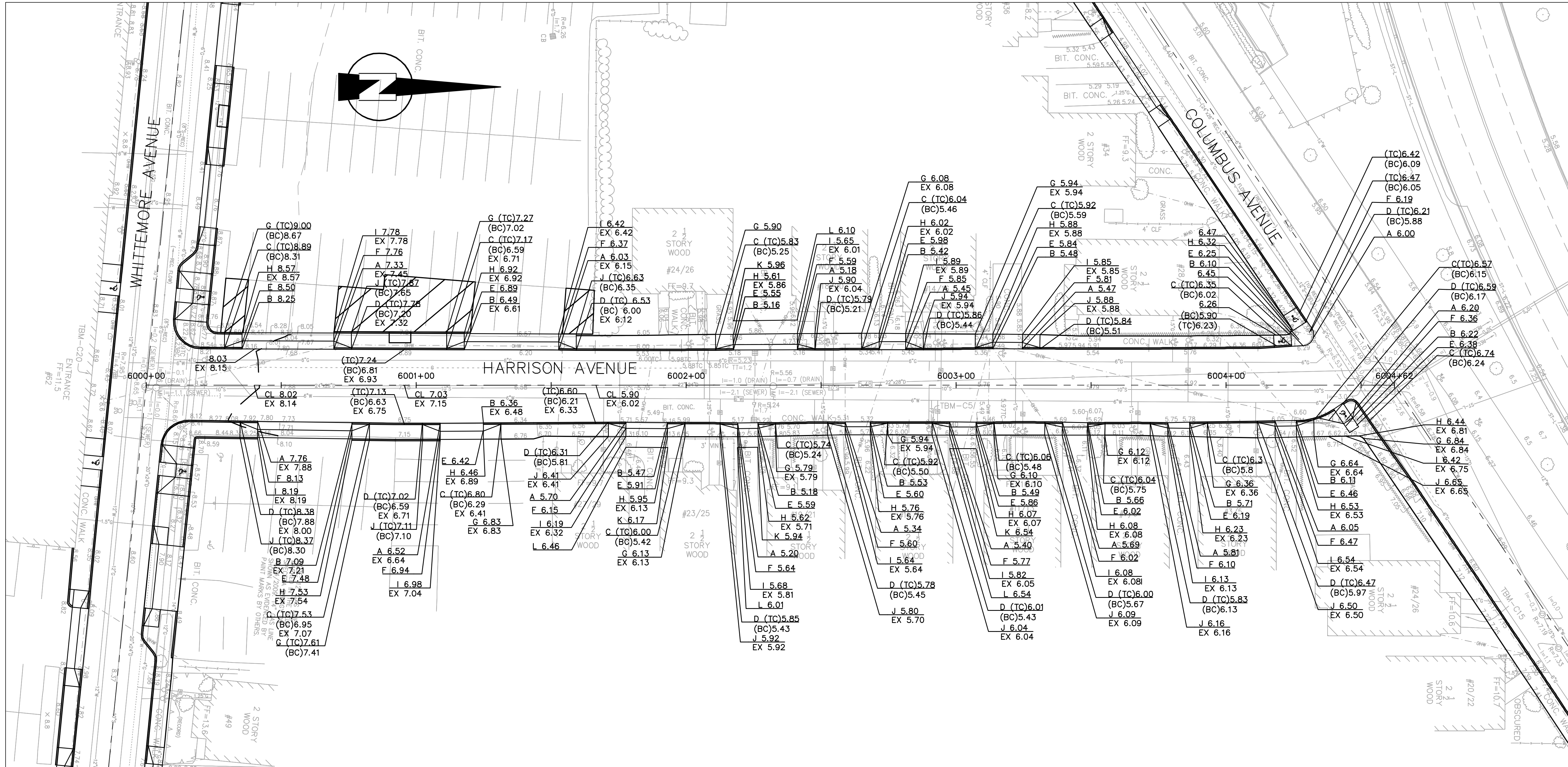
Scale	AS NOTED			
Date	NOVEMBER 2009			
Job No.	2008288.03-A			
Designed by	TAL			
Drawn by	TAL			
Checked by	SFJ	No.	Description	Date
Approved by	JJS		REVISIONS	



Client	CITY OF CAMBRIDGE, MA
Project	ALEWIFE BROOK FLOATABLES CONTROL (CONTRACT 4) AND CAM 400 SEWER SEPARATION PROJECT (CONTRACT 13)
Drawing	ROADWAY - CONSTRUCTION PLAN STA 6000+00 TO 6004+62

Sheet	R-39
File No.	--- OF XX

PLOT DATE=11/5/2009 8:44:04 AM USER=SEAN JUDGE FILENAME=G:\clients\Cambridge\MA\2008288 - CAM 400 Sewer Separation\Civil\Harrison Ave\2008288-03-Harrison grading.dwg

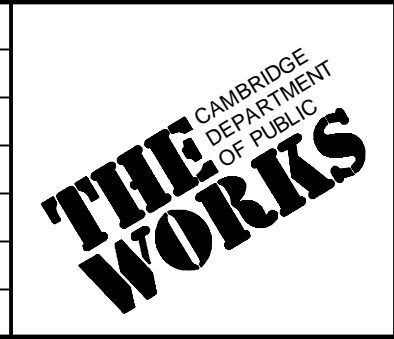


**NOT FOR
CONSTRUCTION
95% QA/QC**

SEA
SEA CONSULTANTS INC.
Scientists/Engineers/Architects
CAMBRIDGE, MASSACHUSETTS CONCORD, NEW HAMPSHIRE
ROCKY HILL, CONNECTICUT AUGUSTA, MAINE
FRAMMINGHAM, MASSACHUSETTS

MWH
BOSTON
MASSACHUSETTS

Scale	AS NOTED		
Date	NOVEMBER 2009		
Job No.	2008288-03-A		
Designed by	TAL		
Drawn by	TAL		
Checked by	SFJ	No.	Description
Approved by	JJS		Date



Client	CITY OF CAMBRIDGE, MA
Project	ALEWIFE BROOK FLOATABLES CONTROL (CONTRACT 4) AND CAM 400 SEWER SEPARATION PROJECT (CONTRACT 13)
Drawing	ROADWAY - GRADING PLAN STA 6000+00 TO 6004+62

Sheet	R-40
File No.	--- OF XX